

Welcome to HomeXchange Tyne and Wear- Gateshead

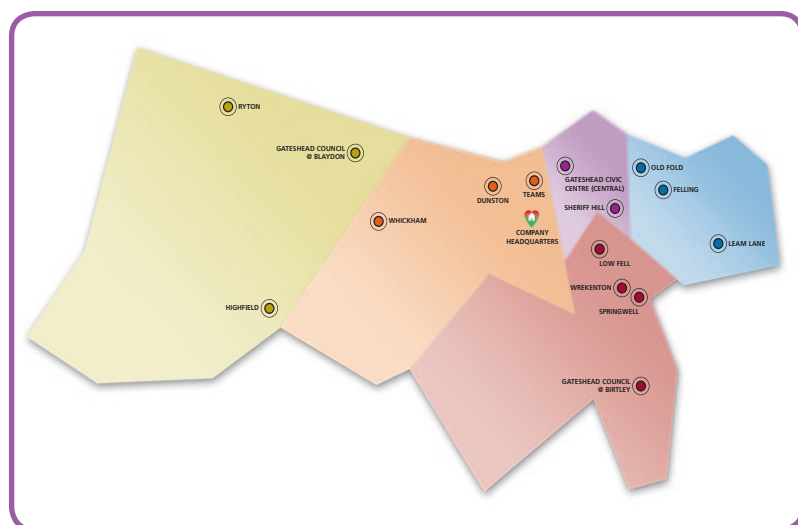
HomeXchange Tyne and Wear is a mutual exchange service that allows you to swap homes with a tenant from your own local authority, but also to advertise for an exchange with a tenant from another area.

The five main Tyne and Wear authorities – Gateshead, Newcastle, North Tyneside, South Tyneside and Sunderland and their respective organisations – have joined together to bring you more choice when looking for homes to exchange with.

That sounds like a good idea, what do I need to do?

1. Firstly, you need to complete the HomeXchange Tyne and Wear application form, available online at www.homexchangetyneandwear.org.uk or from your housing office.
2. Once your application has been received and accepted onto the exchange register, your property details and the type of home you are looking for will be advertised online.
3. You can then search the exchange register at www.homexchangetyneandwear.org.uk to find any suitable properties and tenants to exchange with.
4. You both then need to get permission from your own housing organisation to swap homes.

Properties available in Gateshead



You have asked to see properties in Gateshead, which are detailed below.

If you would like to see possible exchanges across Tyne and Wear or further information visit www.homexchangetyneandwear.org.uk or ask at your housing office.



www.homexchangetyneandwear.org.uk

The Gateshead Housing Company, Keelman House, Fifth Avenue Business Park,
Fifth Avenue, Team Valley Trading Estate, Gateshead, NE11 0XA.

Mutual Exchange Property

Mutual Exchange Property

Landlord: Gateshead Housing Company

Abbey Court Estate



Bedrooms 2

Jedburgh Close, Gateshead, NE8 4AW

1st floor, Flat, Bathroom and W/C, Communal garden

REQUIRES: 2 Bedrooms - 3 Bedrooms House Preferred area: Dunston Road Estate

for additional information see website or contact local office.



Ref no :21004

Mutual Exchange Property

Landlord: Gateshead Housing Company

Abbotsford Road



Bedrooms 2

felling house gardens, Gateshead, Tyne and Wear ,

Ground Floor, House, Upper Floor Bathroom with W/C, Private garden

REQUIRES: 2 Bedrooms - 3 Bedrooms House Preferred area: Wardley

for additional information see website or contact local office.



Ref no :21314

Mutual Exchange Property

Landlord: Gateshead Housing Company

Abbotsford Road



Bedrooms 2

Abbotsford Road, Tyne and Wear , Gateshead,

2nd floor, House, Bathroom and W/C, Private garden

REQUIRES: 3 Bedrooms House Preferred area: Kibblesworth

for additional information see website or contact local office.



Ref no :18489

Mutual Exchange Property

Landlord: Gateshead Housing Company

Abbotsford Road



Bedrooms 2

Abbotsford Road, Gateshead, NE10 0EU

House, Bathroom and W/C, Check garden on viewing

REQUIRES: 1 Bedroom House, Flat Preferred area: Wellington Street Estate

for additional information see website or contact local office.



Ref no :11234

Mutual Exchange Property

Landlord: Gateshead Housing Company

Abbotsford Road



Bedrooms 2

Abbotsford Road, Felling, Gateshead, NE10 0EU

House, Bathroom and W/C, Private garden

REQUIRES: 2 Bedrooms House Preferred area: Pelaw

for additional information see website or contact local office.



Ref no :12435

Mutual Exchange Property

Landlord: Gateshead Housing Company

Acquired ex Railway



Bedrooms 2

Ash Street, Blaydon on Tyne, Gateshead, NE21 5HS

House, Upper Floor Bathroom with W/C, Private garden

REQUIRES: 3 Bedrooms House Preferred area: Parkfield Tower Gardens

for additional information see website or contact local office.



Ref no :12766

Key



Number of bedrooms



Off road parking



Own garden



Shared Garden



No Garden



Pets permitted



Pets not permitted



Lift available



Supported housing

Mutual Exchange Property

Landlord:Gateshead Housing Company

Acquired ex Railway



Bedrooms 2

Ash Street, Blaydon, Gateshead, NE21 5HS

House, Bathroom and W/C, Check garden on viewing

REQUIRES: 2 Bedrooms Flat Preferred area: Snookhill/St Pauls

for additional information see website or contact local office.



Ref no :2664

Mutual Exchange Property

Landlord:Gateshead Housing Company

Acquired Low Fell



Bedrooms 1

EDENDALE TERRACE, GATESHEAD, TYNE AND WEAR,

Ground Floor, Flat, Bathroom and W/C, Private garden

REQUIRES: 2 Bedrooms House Preferred area: Acquired Low Fell

for additional information see website or contact local office.



Ref no :5473

Mutual Exchange Property

Landlord:Gateshead Housing Company

Acquired Low Fell



Bedrooms 2

portobello way, birtley, chester-le-street, co

2nd floor, Flat, Bathroom and W/C, No garden

REQUIRES: 2 Bedrooms - 3 Bedrooms Flat Preferred area: Portmeads

for additional information see website or contact local office.



Ref no :1968

Mutual Exchange Property

Landlord:Gateshead Housing Company

Acquired Low Fell



Bedrooms 3

Smithyford, Low fell, Gateshead, Tyne and Wear,

House, Upper Floor Shower and W/C, Private garden, Adapted,

REQUIRES: 2 Bedrooms House, Bungalow Preferred area: Cedars Green Estate

for additional information see website or contact local office.



Ref no :6364

Mutual Exchange Property

Landlord:South Tyneside Homes

Acquired Low Fell



Bedrooms 1

King Charles Tower, Shield Street, Shieldfield, NE2

1st floor, Maisonette, Bathroom and W/C, No garden

REQUIRES: 1 Bedroom - 2 Bedrooms House, Flat, Bungalow Preferred area: Abbotsford Road

for additional information see website or contact local office.



Ref no :8985

Mutual Exchange Property

Landlord:Gateshead Housing Company

Acquired Low Fell



Bedrooms 2

,underhill, 99,kells lane, low fell, gateshead, ne95xg

1st floor, Flat, Ground Floor Bathroom with Separate WC, Communal garden

REQUIRES: 1 Bedroom - 2 Bedrooms Bungalow Preferred area: Wardley

for additional information see website or contact local office.



Ref no :12834

Key



Number of bedrooms



Off road parking



Own garden



Shared Garden



No Garden



Pets permitted



Pets not permitted



Lift available



Supported housing

Mutual Exchange Property

Landlord: Gateshead Housing Company

Acquired Low Fell



Bedrooms 2

Underhill, 99 Kells Lane, Gateshead, NE9 5XG

1st floor, Flat, Ground Floor Shower and W/C, Communal garden, Adapted, Supported Housing

REQUIRES: 1 Bedroom - 2 Bedrooms House, Bungalow Preferred area: Ellen Wilkinson Estate

for additional information see website or contact local office.



Ref no :12905

Mutual Exchange Property

Landlord: Gateshead Housing Company

Acquired Low Fell



Bedrooms 1

Northbourne Street, Shipcote, NE8 4AH

1st floor, Flat, Bathroom with W/C and Ensuite facilities, Private garden

REQUIRES: 2 Bedrooms - 3 Bedrooms House Preferred area: Barley Mow New

for additional information see website or contact local office.



Ref no :14845

Mutual Exchange Property

Landlord: Gateshead Housing Company

Acquired Low Fell



Bedrooms 2

Borrowdale Gardens, Gateshead, Tyne & Wear, NE9

Ground Floor, House, Upper Floor Bathroom with W/C, Private garden

REQUIRES: 1 Bedroom Flat Preferred area: Acquired Low Fell

for additional information see website or contact local office.



Ref no :19582

Mutual Exchange Property

Landlord: Gateshead Housing Company

Acquired Low Fell



Bedrooms 1

Greystoke Gardens, Harlow Green, Gateshead, NE9

1st floor, Flat, Upper Floor Bathroom with W/C, Communal garden

REQUIRES: 2 Bedrooms House Preferred area: Acquired Low Fell

for additional information see website or contact local office.



Ref no :19594

Mutual Exchange Property

Landlord: Gateshead Housing Company

Acquired Low Fell



Bedrooms 3

Granville Street, Gateshead, Tyne and Wear, NE8

2nd floor, House, Upper Floor Bathroom and Separate WC, Check garden on viewing

REQUIRES: 3 Bedrooms House Preferred area: Kibblesworth

for additional information see website or contact local office.



Ref no :25492

Mutual Exchange Property

Landlord: Gateshead Housing Company

Acquired Shipcote



Bedrooms 1

Camborne Grove, Gateshead, NE8 4EX

Ground Floor, Flat, Ground Floor Shower and W/C, Private garden, Adapted,

REQUIRES: 2 Bedrooms Flat, Bungalow Preferred area: Worcester Green Estate

for additional information see website or contact local office.



Ref no :4991

Key



Number of bedrooms



Off road parking



Own garden



Shared Garden



No Garden



Pets permitted



Pets not permitted



Lift available



Supported housing

Mutual Exchange Property

Landlord: Gateshead Housing Company

Allerdene



Bedrooms 3

woodford allerdene lowfell, gateshead, ne9 6gg

Ground Floor, House, Bathroom with W/C and Ensuite facilities, Check garden on viewing

REQUIRES: 3 Bedrooms - 4 Bedrooms House Preferred area: Lobley Hill

for additional information see website or contact local office.



Ref no :2889

Mutual Exchange Property

Landlord: Gateshead Housing Company

Allerdene



Bedrooms 3

GAINFORD, ALLERDENE, GATESHEAD, TYNE WEAR,

1st floor, House, Ground Floor Shower and W/C, Private garden

REQUIRES: 3 Bedrooms - 5 Bedrooms House Preferred area: Beacon Lough lower

for additional information see website or contact local office.



Ref no :1645

Mutual Exchange Property

Landlord: Gateshead Housing Company

Allerdene



Bedrooms 2

hertford, allerdene, gateshead, ne96eg

2nd floor, Flat, Bathroom and W/C, Communal garden

REQUIRES: 1 Bedroom Flat Preferred area: Allerdene

for additional information see website or contact local office.



Ref no :6587

Mutual Exchange Property

Landlord: Gateshead Housing Company

Allerdene



Bedrooms 2

Stretford Court, Gateshead, NE9 6LZ

7th floor, Flat, Ground Floor Bathroom with Separate WC, No garden

REQUIRES: 2 Bedrooms - 3 Bedrooms House Preferred area: Beacon Lough East

for additional information see website or contact local office.



Ref no :11363

Mutual Exchange Property

Landlord: Gateshead Housing Company

Allerdene



Bedrooms 1

Gainford, Allerdene, gateshead, NE9 6PF

Ground Floor, Flat, Ground Floor Bathroom with W/C, Communal garden

REQUIRES: 2 Bedrooms House Preferred area: Allerdene

for additional information see website or contact local office.



Ref no :12289

Mutual Exchange Property

Landlord: Gateshead Housing Company

Allerdene



Bedrooms 3

Hertford, Gateshead, NE9 6DG

House, Upper Floor Bathroom with W/C, Courtyard garden

REQUIRES: 4 Bedrooms House Preferred area: Acquired Low Fell

for additional information see website or contact local office.



Ref no :10261

Key



Number of bedrooms



Off road parking



Own garden



Shared Garden



No Garden



Pets permitted



Pets not permitted



Lift available



Supported housing

Mutual Exchange Property

Landlord:Gateshead Housing Company

Allerdene



Bedrooms 2

salford, Lowfell, Gateshead, Tyne & wear, Ne96bg

1st floor, Flat, Bathroom with W/C and Ensuite facilities, Check garden on viewing

REQUIRES: 1 Bedroom - 3 Bedrooms House, Flat Preferred area: Lakes Estate

for additional information see website or contact local office.



Ref no :23143

Mutual Exchange Property

Landlord:Gateshead Housing Company

Allerdene



Bedrooms 3

Ashford, Allerdene, Gateshead, Ne96yg

Ground Floor, House, Upper Floor Bathroom with W/C, No garden

REQUIRES: 2 Bedrooms House Preferred area: Lyndhurst Lower

for additional information see website or contact local office.



Ref no :23651

Mutual Exchange Property

Landlord:Gateshead Housing Company

Allerdene



Bedrooms 3

dartmouth avenue, gateshead, ne9 6nx

1st floor, House, Bathroom and W/C, Check garden on viewing

REQUIRES: 3 Bedrooms - 4 Bedrooms House Preferred area: Wrekenton

for additional information see website or contact local office.



Ref no :23825

Mutual Exchange Property

Landlord:Gateshead Housing Company

Allerdene



Bedrooms 3

ashford, Gateshead , Ne96xg

Ground Floor, House, Bathroom and W/C, Private garden

REQUIRES: 3 Bedrooms House Preferred area: Acquired Low Fell

for additional information see website or contact local office.



Ref no :21664

Mutual Exchange Property

Landlord:Gateshead Housing Company

Allerdene



Bedrooms 3

Deneford, Allerdene, Gateshead, NE9 6LD

House, Upper Floor Bathroom with W/C and Separate W/C, Private garden

REQUIRES: 1 Bedroom Flat, Bungalow Preferred area: Harlow Green

for additional information see website or contact local office.



Ref no :18811

Mutual Exchange Property

Landlord:Gateshead Housing Company

Allerdene



Bedrooms 2

Barford ct, Allerdene, Gateshead, tyne and wear,

7th floor, Flat, No garden

REQUIRES: 1 Bedroom Flat Preferred area: Florence Avenue Estate

for additional information see website or contact local office.



Ref no :16011

Key



Number of bedrooms



Off road parking



Own garden



Shared Garden



No Garden



Pets permitted



Pets not permitted



Lift available



Supported housing

Mutual Exchange Property

Landlord:Gateshead Housing Company

Allerdene Multi Storey Blocks



Bedrooms 2

stretford court, alladene, gateshead, ne9 6lu

1st floor, Flat, Bathroom and W/C, No garden

REQUIRES: 1 Bedroom Flat Preferred area: Allerdene Multi Storey Blocks

for additional information see website or contact local office.



Ref no :16172

Mutual Exchange Property

Landlord:Gateshead Housing Company

Allerdene Multi Storey Blocks



Bedrooms 1

Stretford Court, Gateshead, NE9 6LU

5th floor, Flat, Bathroom and W/C, Communal garden

REQUIRES: 1 Bedroom - 3 Bedrooms House, Flat, Maisonette Preferred area: Sunnside

for additional information see website or contact local office.



Ref no :21596

Mutual Exchange Property

Landlord:Gateshead Housing Company

Allerdene Multi Storey Blocks



Bedrooms 2

stretford court, Low Fell, Gateshead, Tyne and

2nd floor, Flat, Bathroom and W/C, No garden

REQUIRES: 1 Bedroom Flat Preferred area: Ventnor Crescent Estate

for additional information see website or contact local office.



Ref no :23252

Mutual Exchange Property

Landlord:Gateshead Housing Company

Allerdene Multi Storey Blocks



Bedrooms 2

barford court, allerdene, low fell, ne9 6lw

Ground Floor, Flat, Ground Floor Bathroom with Separate WC, No garden

REQUIRES: 1 Bedroom - 3 Bedrooms Flat, Maisonette Preferred area: Harlow Green Multi Story Blocks

for additional information see website or contact local office.



Ref no :7047

Mutual Exchange Property

Landlord:Gateshead Housing Company

Argyle Estate



Bedrooms 2

Milton Square, Gateshead, NE8 3HJ

House, Bathroom and W/C, Private garden

REQUIRES: 2 Bedrooms - 4 Bedrooms House Preferred area: Wardley

for additional information see website or contact local office.



Ref no :20984

Mutual Exchange Property

Landlord:Gateshead Housing Company

Bagnall Grange



Bedrooms 3

briar close, Blaydon, Tyne and Wear, Ne214ew

House, Bathroom and W/C, Private garden

REQUIRES: 3 Bedrooms - 4 Bedrooms House Preferred area: Ryton Central

for additional information see website or contact local office.



Ref no :21540

Key



Number of bedrooms



Off road parking



Own garden



Shared Garden



No Garden



Pets permitted



Pets not permitted



Lift available



Supported housing

Mutual Exchange Property

Landlord: Gateshead Housing Company

Bagnall Grange



Bedrooms 2

Snowdrop close, Blaydon, Tyne and wear, NE214eh

House, Bathroom and W/C, Private garden

REQUIRES: 3 Bedrooms - 4 Bedrooms House Preferred area: Parkhead

for additional information see website or contact local office.



Ref no :23285

Mutual Exchange Property

Landlord: Gateshead Housing Company

Bagnall Grange



Bedrooms 2

Crocus Close, Winlaton, Blaydon on Tyne, NE21 4EL

1st floor, House, Upper Floor Shower and W/C, Check garden on viewing, Adapted,

REQUIRES: 2 Bedrooms House Preferred area: Parkhead

for additional information see website or contact local office.



Ref no :741

Mutual Exchange Property

Landlord: Gateshead Housing Company

Bagnall Grange



Bedrooms 2

Iris Close, Blaydon On Tyne, Gateshead, NE21 4EQ

Ground Floor, House, Bathroom and W/C, Private garden

REQUIRES: 3 Bedrooms House Preferred area: Parkhead

for additional information see website or contact local office.



Ref no :10095

Mutual Exchange Property

Landlord: Gateshead Housing Company

Barley Mow New



Bedrooms 2

oxford place, birtley, chester-le-street, county

Ground Floor, House, Bathroom and W/C, Private garden

REQUIRES: 3 Bedrooms House Preferred area: Vigo

for additional information see website or contact local office.



Ref no :43

Mutual Exchange Property

Landlord: Gateshead Housing Company

Barley Mow New



Bedrooms 2

dorset avenue, barley mow, chester le street, co

2nd floor, House, Bathroom and W/C, Private garden

REQUIRES: 3 Bedrooms - 4 Bedrooms House Preferred area: Kibblesworth

for additional information see website or contact local office.



Ref no :2192

Mutual Exchange Property

Landlord: Gateshead Housing Company

Barley Mow New



Bedrooms 3

kinross close, barley mow, chester-le-street,

House, Bathroom and W/C, Private garden

REQUIRES: 3 Bedrooms House Preferred area: Birtley East

for additional information see website or contact local office.



Ref no :4071

Key



Number of bedrooms



Off road parking



Own garden



Shared Garden



No Garden



Pets permitted



Pets not permitted



Lift available



Supported housing

Mutual Exchange Property

Landlord: Gateshead Housing Company

Barley Mow New



Bedrooms 2

Dorset Avenue, Birtley, Chester-le-Street, DH3 2DU

House, Upper Floor Bathroom with W/C, Private garden

REQUIRES: 3 Bedrooms - 4 Bedrooms House Preferred area: Barley Mow New

for additional information see website or contact local office.



Ref no :4876

Mutual Exchange Property

Landlord: Gateshead Housing Company

Barley Mow New



Bedrooms 3

rosslyn place, barley mow, birtley, dh3 2dt

House, Bathroom and W/C, Private garden

REQUIRES: 3 Bedrooms - 4 Bedrooms House, Bungalow Preferred area: Barley Mow New

for additional information see website or contact local office.



Ref no :5486

Mutual Exchange Property

Landlord: Gateshead Housing Company

Barley Mow Old



Bedrooms 2

DORSET AVENUE, BIRTLEY, CHESTER-LE-STREET, CO

1st floor, House, Upper Floor Bathroom and Separate WC, Private garden

REQUIRES: 2 Bedrooms - 3 Bedrooms House Preferred area: Birtley East

for additional information see website or contact local office.



Ref no :4135

Mutual Exchange Property

Landlord: Gateshead Housing Company

Barley Mow Old



Bedrooms 3

Dorset avenue, Barley mow, Birtley, Dh3 2du

House, Bathroom and W/C, Private garden

REQUIRES: 2 Bedrooms - 3 Bedrooms House Preferred area: Acquired Low Fell

for additional information see website or contact local office.



Ref no :2536

Mutual Exchange Property

Landlord: Gateshead Housing Company

Barley Mow Old



Bedrooms 2

dorset avenue, birtley , chester le street, county

1st floor, House, Upper Floor Bathroom and Separate WC, Private garden

REQUIRES: 2 Bedrooms - 3 Bedrooms House Preferred area: Barley Mow New

for additional information see website or contact local office.



Ref no :3415

Mutual Exchange Property

Landlord: Gateshead Housing Company

Barley Mow Old



Bedrooms 2

DORSET AVENUE, BIRTLEY, CHESTER-LE-STREET, CO

House, Upper Floor Bathroom and Separate WC, Check garden on viewing

REQUIRES: 2 Bedrooms - 3 Bedrooms House Preferred area: Barley Mow New

for additional information see website or contact local office.



Ref no :267

Key



Number of bedrooms



Off road parking



Own garden



Shared Garden



No Garden



Pets permitted



Pets not permitted



Lift available



Supported housing

Mutual Exchange Property

Landlord: Gateshead Housing Company

Barley Mow Old



Bedrooms 2

dorset avenue, birtley, chester le street , county

2nd floor, House, Upper Floor Bathroom and Separate WC, Private garden

REQUIRES: 2 Bedrooms House Preferred area: Barley Mow New

for additional information see website or contact local office.



Ref no :6836

Mutual Exchange Property

Landlord: Gateshead Housing Company

Barley Mow Old



Bedrooms 3

Dorset avenue, Barley mow, Birtley, Dh3 2dz

1st floor, House, Bathroom and W/C, Private garden

REQUIRES: 3 Bedrooms House Preferred area: Cedars Green Estate

for additional information see website or contact local office.



Ref no :6498

Mutual Exchange Property

Landlord: Gateshead Housing Company

Barley Mow Old



Bedrooms 2

Pwembroke Avenue, Birtley, DH3 2DH

House, Upper Floor Bathroom with W/C, Private garden

REQUIRES: 2 Bedrooms - 3 Bedrooms House Preferred area: Barley Mow New

for additional information see website or contact local office.



Ref no :5745

Mutual Exchange Property

Landlord: Gateshead Housing Company

Barley Mow Old



Bedrooms 4

York Road, Birtley, Chester-Le-Street, DH3 2DD

1st floor, House, Ground Floor Bathroom with Separate WC, Private garden

REQUIRES: 3 Bedrooms - 4 Bedrooms House Preferred area: Acquired Low Fell

for additional information see website or contact local office.



Ref no :6265

Mutual Exchange Property

Landlord: Gateshead Housing Company

Barley Mow Old



Bedrooms 2

Dorset avenue, Barley mow, Birtley, County durham,

1st floor, House, Bathroom and W/C, Private garden

REQUIRES: 3 Bedrooms House Preferred area: Barley Mow New

for additional information see website or contact local office.



Ref no :11157

Mutual Exchange Property

Landlord: Gateshead Housing Company

Barley Mow Old



Bedrooms 2

york road, barley mow, birtley, county durham, dh3

2nd floor, House, Upper Floor Bathroom and Separate WC, Private garden

REQUIRES: 3 Bedrooms House Preferred area: Barley Mow New

for additional information see website or contact local office.



Ref no :12930

Key



Number of bedrooms



Off road parking



Own garden



Shared Garden



No Garden



Pets permitted



Pets not permitted



Lift available



Supported housing

Mutual Exchange Property

Landlord:Gateshead Housing Company

Barley Mow Old



Bedrooms 3

Dorset Avenue, Birtley, Chester le Street, Co

House, Ground Floor Bathroom with W/C, Private garden

REQUIRES: 3 Bedrooms House Preferred area: Barley Mow New

for additional information see website or contact local office.



Ref no :12637

Mutual Exchange Property

Landlord:Gateshead Housing Company

Barley Mow Old



Bedrooms 4

York Road, Barley Mow Estate, Birtley, DH3 2DE

House, Check bathroom on viewing, Check garden on viewing

REQUIRES: 1 Bedroom - 2 Bedrooms House Preferred area: Vigo

for additional information see website or contact local office.



Ref no :20112

Mutual Exchange Property

Landlord:Gateshead Housing Company

Barley Mow Old



Bedrooms 2

Dorset Avenue, Barley Mow, Birtley, Co. Durham,

House, Bathroom and W/C, Private garden, Supported Housing

REQUIRES: 2 Bedrooms - 3 Bedrooms House Preferred area: Wrekenton

for additional information see website or contact local office.



Ref no :20296

Mutual Exchange Property

Landlord:Gateshead Housing Company

Barley Mow Old



Bedrooms 3

Dorset avenue, Barley mow birtley, Co Durham,

House, Bathroom and W/C, Check garden on viewing

REQUIRES: 4 Bedrooms - 5 Bedrooms House Preferred area: Barley Mow Old

for additional information see website or contact local office.



Ref no :20326

Mutual Exchange Property

Landlord:Gateshead Housing Company

Barley Mow Old



Bedrooms 2

YORK ROAD, BARLEY MOW, BIRTLEY,

2nd floor, House, Upper Floor Bathroom and Separate WC, Private garden

REQUIRES: 3 Bedrooms - 4 Bedrooms House Preferred area: Barley Mow New

for additional information see website or contact local office.



Ref no :16632

Mutual Exchange Property

Landlord:Gateshead Housing Company

Barley Mow Old



Bedrooms 2

sandray close, birtley, Chester-le-street, dh32hj

House, Private garden

REQUIRES: 2 Bedrooms House Preferred area: Birtley East

for additional information see website or contact local office.



Ref no :15700

Key



Number of bedrooms



Off road parking



Own garden



Shared Garden



No Garden



Pets permitted



Pets not permitted



Lift available



Supported housing

Mutual Exchange Property

Landlord:Gateshead Housing Company

Barley Mow Old



Bedrooms 3

Bedford Avenue, Birtley , Chester Le Street, DH3

House, Upper Floor Bathroom and Separate WC, Private garden, Adapted,

REQUIRES: 2 Bedrooms House, Maisonette Preferred area: Barley Mow Old

for additional information see website or contact local office.



Ref no :15777

Mutual Exchange Property

Landlord:Gateshead Housing Company

Barley Mow Old



Bedrooms 3

DORSET AVENUE, BARLEY MOW, BIRTLEY, DH32DY

Ground Floor, House, Ground Floor Bathroom with W/C, Private garden

REQUIRES: 3 Bedrooms House, Maisonette Preferred area: Vigo

for additional information see website or contact local office.



Ref no :17469

Mutual Exchange Property

Landlord:Gateshead Housing Company

Barlow



Bedrooms 2

iris close, Blaydon, Gateshead, Ne21 4eq

House, Bathroom and W/C, Private garden

REQUIRES: 3 Bedrooms House Preferred area: Parkhead

for additional information see website or contact local office.



Ref no :21839

Mutual Exchange Property

Landlord:Gateshead Housing Company

Barlow



Bedrooms 3

The Crescent, Barlow, Blaydon, NE21 6JX

Ground Floor, House, Private garden

REQUIRES: 2 Bedrooms - 3 Bedrooms House, Bungalow Preferred area: South Sherburn Estate

for additional information see website or contact local office.



Ref no :24770

Mutual Exchange Property

Landlord:Gateshead Housing Company

Barns Close



Bedrooms 3

Brisbane court, Gateshead, Ne8 2ej

7th floor, Maisonette, Upper Floor Bathroom with W/C, No garden, Supported Housing

REQUIRES: 2 Bedrooms - 3 Bedrooms House Preferred area: Jarrow Central

for additional information see website or contact local office.



Ref no :17887

Mutual Exchange Property

Landlord:Gateshead Housing Company

Barns Close



Bedrooms 3

Adelaide Court, Gateshead, NE8 2EE

7th floor, Maisonette, Upper Floor Bathroom with W/C, No garden

REQUIRES: 2 Bedrooms House, Maisonette Preferred area: Coatsworth

for additional information see website or contact local office.



Ref no :15788

Key



Number of bedrooms



Off road parking



Own garden



Shared Garden



No Garden



Pets permitted



Pets not permitted



Lift available



Supported housing

Mutual Exchange Property

Landlord:Gateshead Housing Company

Barns Close



Bedrooms 3

Brisbane court, Gateshead, Tyne and Wear, Ne82EJ

7th floor, Maisonette, Bathroom and W/C, No garden

REQUIRES: 2 Bedrooms House, Bungalow Preferred area: Sheriff Hill

for additional information see website or contact local office.



Ref no :12505

Mutual Exchange Property

Landlord:Gateshead Housing Company

Barns Close



Bedrooms 2

Melbourne Court, Gateshead, Tyne and Wear, NE8

7th floor, Flat, Bathroom and W/C, No garden

REQUIRES: 1 Bedroom - 2 Bedrooms House, Flat, Bungalow Preferred area: Felling

for additional information see website or contact local office.



Ref no :14428

Mutual Exchange Property

Landlord:Gateshead Housing Company

Barns Close



Bedrooms 3

melbourne court, gateshead, ne8 2ed

1st floor, Maisonette, Upper Floor Bathroom with W/C, No garden

REQUIRES: 2 Bedrooms Maisonette Preferred area: Barns Close

for additional information see website or contact local office.



Ref no :12333

Mutual Exchange Property

Landlord:Gateshead Housing Company

Barns Close



Bedrooms 3

sydney ct, gateshead, tyne and wear, ne8 2eh

3rd floor, Maisonette, Upper Floor Bathroom with W/C, No garden

REQUIRES: 2 Bedrooms - 3 Bedrooms House Preferred area: Fieldhouse

for additional information see website or contact local office.



Ref no :8989

Mutual Exchange Property

Landlord:Gateshead Housing Company

Barns Close



Bedrooms 3

Melbourne Court, Gateshead, NE8 2ED

7th floor, Maisonette, Bathroom and W/C, No garden

REQUIRES: 2 Bedrooms House Preferred area: Chopwell

for additional information see website or contact local office.



Ref no :1531

Mutual Exchange Property

Landlord:Gateshead Housing Company

Battlefield



Bedrooms 3

a City Road, Newcastle Upon Tyne, NE1 2AQ

2nd floor, Maisonette, Upper Floor Bathroom with W/C, No garden

REQUIRES: 3 Bedrooms - 4 Bedrooms House, Bungalow Preferred area: Ryton Central

for additional information see website or contact local office.



Ref no :16964

Key



Number of bedrooms



Off road parking



Own garden



Shared Garden



No Garden



Pets permitted



Pets not permitted



Lift available



Supported housing

Mutual Exchange Property

Landlord:Gateshead Housing Company

Beacon Lough East



Bedrooms 3

Brackenlaw, Beacon Lough East, Gateshead, NE9

1st floor, House, Upper Floor Bathroom with W/C, Private garden

REQUIRES: 2 Bedrooms House Preferred area: Eighton Banks

for additional information see website or contact local office.



Ref no :16633

Mutual Exchange Property

Landlord:Gateshead Housing Company

Beacon Lough East



Bedrooms 3

Gorsehill, Beacon Lough East, Gateshead, NE9 6SJ

House, Bathroom and W/C, Private garden

REQUIRES: 3 Bedrooms House Preferred area: Wrekenton

for additional information see website or contact local office.



Ref no :16432

Mutual Exchange Property

Landlord:Gateshead Housing Company

Beacon Lough East



Bedrooms 1

Fell Court, Gateshead, NE9 6RN

7th floor, Flat, Bathroom and W/C, No garden

REQUIRES: 1 Bedroom Flat Preferred area: Beacon Lough Upper

for additional information see website or contact local office.



Ref no :16062

Mutual Exchange Property

Landlord:Gateshead Housing Company

Beacon Lough East



Bedrooms 3

Lingcrest, Gateshead, NE9 6SN

House, Bathroom and W/C, Private garden

REQUIRES: 2 Bedrooms House Preferred area: Staneway Estate

for additional information see website or contact local office.



Ref no :17478

Mutual Exchange Property

Landlord:Gateshead Housing Company

Beacon Lough East



Bedrooms 3

heatherlaw, beacon lough east, gateshead, tyne and

Ground Floor, House, Bathroom and W/C, Private garden

REQUIRES: 3 Bedrooms - 4 Bedrooms House Preferred area: Wrekenton

for additional information see website or contact local office.



Ref no :18340

Mutual Exchange Property

Landlord:Gateshead Housing Company

Beacon Lough East



Bedrooms 3

Stonecrop, Beacon Lough, NE9 6SD

House, Upper Floor Bathroom with W/C, No garden

REQUIRES: 3 Bedrooms House, Flat Preferred area: Beacon Lough Upper

for additional information see website or contact local office.



Ref no :21274

Key



Number of bedrooms



Off road parking



Own garden



Shared Garden



No Garden



Pets permitted



Pets not permitted



Lift available



Supported housing

Mutual Exchange Property

Landlord:Gateshead Housing Company

Beacon Lough East



Bedrooms 2

Duddon Place, Gateshead, NE9 6YR

Ground Floor, Flat, Ground Floor Bathroom with Separate WC, Communal garden

REQUIRES: 2 Bedrooms - 3 Bedrooms House Preferred area: Beacon Lough East

for additional information see website or contact local office.



Ref no :20804

Mutual Exchange Property

Landlord:Gateshead Housing Company

Beacon Lough East



Bedrooms 1

Beacon Court, Gateshead, NE9 6RQ

2nd floor, Flat, No garden

REQUIRES: 2 Bedrooms House Preferred area: Carr Hill

for additional information see website or contact local office.



Ref no :20978

Mutual Exchange Property

Landlord:Gateshead Housing Company

Beacon Lough East



Bedrooms 3

Balmlaw, Gateshead, NE9 7DQ

House, Upper Floor Bathroom with W/C, Private garden

REQUIRES: 3 Bedrooms - 4 Bedrooms House Preferred area: Windy Nook

for additional information see website or contact local office.



Ref no :23170

Mutual Exchange Property

Landlord:Gateshead Housing Company

Beacon Lough East



Bedrooms 3

Fernlough, Gateshead, NE9 6SL

House, Bathroom and W/C, Private garden

REQUIRES: 3 Bedrooms - 4 Bedrooms House Preferred area: Barley Mow New

for additional information see website or contact local office.



Ref no :4147

Mutual Exchange Property

Landlord:Gateshead Housing Company

Beacon Lough East



Bedrooms 2

Beacon Court, Beacon Lough East, Gateshead, Tyne

Above 9th floor, Flat, Bathroom and W/C, No garden

REQUIRES: 1 Bedroom - 2 Bedrooms Flat, Studio flat, Maisonette Preferred area: Beacon Lough East

for additional information see website or contact local office.



Ref no :8775

Mutual Exchange Property

Landlord:Gateshead Housing Company

Beacon Lough East



Bedrooms 3

heatherlaw, beacon lough east, gateshead, tyne and

Ground Floor, House, Bathroom and W/C, Private garden

REQUIRES: 2 Bedrooms House Preferred area: Birtley East

for additional information see website or contact local office.



Ref no :7564

Key



Number of bedrooms



Off road parking



Own garden



Shared Garden



No Garden



Pets permitted



Pets not permitted



Lift available



Supported housing

Mutual Exchange Property

Landlord:Gateshead Housing Company

Beacon Lough East



Bedrooms 3

Whinlaw, Gateshead, NE9 6RS

House, Bathroom and W/C, Private garden

REQUIRES: 2 Bedrooms - 3 Bedrooms House Preferred area: Springwell

for additional information see website or contact local office.



Ref no :8067

Mutual Exchange Property

Landlord:Gateshead Housing Company

Beacon Lough East



Bedrooms 3

Balmlaw, Beacon Lough East, Gateshead, NE9 7DG

House, Upper Floor Bathroom with W/C, Private garden

REQUIRES: 3 Bedrooms House Preferred area: Long Bank Estate

for additional information see website or contact local office.



Ref no :8373

Mutual Exchange Property

Landlord:Gateshead Housing Company

Beacon Lough East



Bedrooms 3

Linden, Gateshead, NE9 7DR

House, Bathroom and W/C, Check garden on viewing

REQUIRES: 3 Bedrooms - 4 Bedrooms Flat Preferred area: Sunnside

for additional information see website or contact local office.



Ref no :6233

Mutual Exchange Property

Landlord:Gateshead Housing Company

Beacon Lough East



Bedrooms 3

BRACKENLAW, GATESHEAD, TYNE AND WEAR, NE9

Ground Floor, House, Upper Floor Bathroom with W/C, Private garden, Adapted,

REQUIRES: 4 Bedrooms - 5 Bedrooms House, Bungalow Preferred area: Beacon Lough East

for additional information see website or contact local office.



Ref no :7392

Mutual Exchange Property

Landlord:Gateshead Housing Company

Beacon Lough East



Bedrooms 1

Larkspur, Beacon Lough East, Gateshead, NE9 6SA

Ground Floor, Flat, Bathroom and W/C, Communal garden

REQUIRES: 2 Bedrooms - 3 Bedrooms House Preferred area: Springwell

for additional information see website or contact local office.



Ref no :11098

Mutual Exchange Property

Landlord:Gateshead Housing Company

Beacon Lough East



Bedrooms 3

whinlaw, gateshead, ne9 6rs

Ground Floor, House, Bathroom and W/C, Communal garden

REQUIRES: 2 Bedrooms - 3 Bedrooms House Preferred area: Wrekenton

for additional information see website or contact local office.



Ref no :14401

Key



Number of bedrooms



Off road parking



Own garden



Shared Garden



No Garden



Pets permitted



Pets not permitted



Lift available



Supported housing

Mutual Exchange Property

Landlord:Gateshead Housing Company

Beacon Lough East



Bedrooms 2

Fell Court, Beacon Lough East, Gateshead, NE9 6RN

2nd floor, Flat, Check bathroom on viewing, No garden

REQUIRES: 2 Bedrooms House Preferred area: Carr Hill

for additional information see website or contact local office.



Ref no :14152

Mutual Exchange Property

Landlord:Gateshead Housing Company

Beacon Lough East



Bedrooms 3

Gorsehill, Gateshead, NE9 6SH

Ground Floor, House, Bathroom and W/C, Private garden

REQUIRES: 3 Bedrooms House Preferred area: Wardley

for additional information see website or contact local office.



Ref no :13713

Mutual Exchange Property

Landlord:Gateshead Housing Company

Beacon Lough East



Bedrooms 3

brackenlaw, beacon lough east, gateshead, tyne &

House, Upper Floor Bathroom with W/C, Private garden

REQUIRES: 3 Bedrooms - 4 Bedrooms House Preferred area: Sheriff Hill

for additional information see website or contact local office.



Ref no :15451

Mutual Exchange Property

Landlord:Gateshead Housing Company

Beacon Lough East



Bedrooms 3

Linden, Gateshead, NE9 7DR

House, Upper Floor Bathroom with W/C, Check garden on viewing

REQUIRES: 3 Bedrooms House Preferred area: Acquired Low Fell

for additional information see website or contact local office.



Ref no :12796

Mutual Exchange Property

Landlord:Gateshead Housing Company

Beacon Lough East



Bedrooms 3

LINDEN, GATESHEAD, NE97DR

House, Bathroom and W/C, Private garden

REQUIRES: 3 Bedrooms - 4 Bedrooms House Preferred area: Wardley

for additional information see website or contact local office.



Ref no :13284

Mutual Exchange Property

Landlord:Gateshead Housing Company

Beacon Lough East



Bedrooms 3

GORSEHILL, GATESHEAD, NE9 6SE

House, Upper Floor Bathroom with W/C, Check garden on viewing

REQUIRES: 4 Bedrooms House Preferred area: Felling

for additional information see website or contact local office.



Ref no :13463

Key



Number of bedrooms



Off road parking



Own garden



Shared Garden



No Garden



Pets permitted



Pets not permitted



Lift available



Supported housing

Mutual Exchange Property

Landlord:Gateshead Housing Company

Beacon Lough lower



Bedrooms 2

Dovedale Gardens, Gateshead, NE9 6NT

Ground Floor, House, Upper Floor Bathroom with W/C, Private garden

REQUIRES: 3 Bedrooms House, Bungalow Preferred area: Wrekenton

for additional information see website or contact local office.



Ref no :13533

Mutual Exchange Property

Landlord:Gateshead Housing Company

Beacon Lough lower



Bedrooms 3

Seascale Place, Gateshead, NE9 6YP

House, Bathroom and W/C, Private garden

REQUIRES: 3 Bedrooms - 4 Bedrooms House Preferred area: Acquired Low Fell

for additional information see website or contact local office.



Ref no :12393

Mutual Exchange Property

Landlord:Gateshead Housing Company

Beacon Lough lower



Bedrooms 4

Grisedale Gardens, Gateshead, NE9 6NN

House, Bathroom and W/C, Private garden

REQUIRES: 3 Bedrooms - 4 Bedrooms House Preferred area: Windy Nook

for additional information see website or contact local office.



Ref no :11809

Mutual Exchange Property

Landlord:Gateshead Housing Company

Beacon Lough lower



Bedrooms 3

Beacon lough road, Gateshead, NE9 6TB

House, Upper Floor Bathroom with W/C, Private garden

REQUIRES: 3 Bedrooms - 4 Bedrooms House Preferred area: Fenham

for additional information see website or contact local office.



Ref no :11260

Mutual Exchange Property

Landlord:Gateshead Housing Company

Beacon Lough lower



Bedrooms 2

Beacon lough road, Gateshead, Tyne and Wear, NE9

1st floor, House, Upper Floor Bathroom and Separate WC, Private garden

REQUIRES: 3 Bedrooms House Preferred area: Beacon Lough lower

for additional information see website or contact local office.



Ref no :7497

Mutual Exchange Property

Landlord:Gateshead Housing Company

Beacon Lough lower



Bedrooms 3

colton gardens, low fell, gateshead, ne9 6nq

Ground Floor, House, Upper Floor Bathroom and Separate WC, Private garden

REQUIRES: 3 Bedrooms - 4 Bedrooms House Preferred area: Allerdene

for additional information see website or contact local office.



Ref no :769

Key



Number of bedrooms



Off road parking



Own garden



Shared Garden



No Garden



Pets permitted



Pets not permitted



Lift available



Supported housing

Mutual Exchange Property

Landlord:Gateshead Housing Company

Beacon Lough lower



Bedrooms 2

LORTON ROAD, GATESHEAD, NE9 6TE

Ground Floor, House, Upper Floor Bathroom and Separate WC, Private garden

REQUIRES: 3 Bedrooms - 4 Bedrooms House Preferred area: Acquired Low Fell

for additional information see website or contact local office.



Ref no :325

Mutual Exchange Property

Landlord:Gateshead Housing Company

Beacon Lough lower



Bedrooms 3

kendal crescent, gateshead, tyne and wear, ne96yb

Basement, House, Upper Floor Bathroom and Separate WC, Private garden

REQUIRES: 2 Bedrooms House Preferred area: Lyndhurst Lower

for additional information see website or contact local office.



Ref no :19123

Mutual Exchange Property

Landlord:Gateshead Housing Company

Beacon Lough lower



Bedrooms 2

Kendal Crescent, Beacon Lough, NE9 6YB

1st floor, House, Upper Floor Bathroom and Separate WC, Private garden

REQUIRES: 2 Bedrooms - 3 Bedrooms House Preferred area: Carr Hill

for additional information see website or contact local office.



Ref no :18573

Mutual Exchange Property

Landlord:Gateshead Housing Company

Beacon Lough lower



Bedrooms 3

Balmlaw, Beacon Lough, Gateshead, NE9 7DQ

House, Check garden on viewing

REQUIRES: 3 Bedrooms - 4 Bedrooms House Preferred area: Beacon Lough Upper

for additional information see website or contact local office.



Ref no :16506

Mutual Exchange Property

Landlord:Gateshead Housing Company

Beacon Lough Upper



Bedrooms 3

gorsehill, beacon lough east, gateshead, tyne and

House, Check bathroom on viewing, Check garden on viewing

REQUIRES: 3 Bedrooms - 4 Bedrooms House Preferred area: Beacon Lough Upper

for additional information see website or contact local office.



Ref no :18834

Mutual Exchange Property

Landlord:Gateshead Housing Company

Beacon Lough Upper



Bedrooms 1

Linden, Gateshead, NE9 7DR

Ground Floor, Flat, Bathroom and W/C, Communal garden, Adapted,

REQUIRES: 2 Bedrooms - 3 Bedrooms House Preferred area: Beacon Lough Upper

for additional information see website or contact local office.



Ref no :19734

Key



Number of bedrooms



Off road parking



Own garden



Shared Garden



No Garden



Pets permitted



Pets not permitted



Lift available



Supported housing

Mutual Exchange Property

Landlord:Gateshead Housing Company

Beacon Lough Upper



Bedrooms 2

HAWKSHEAD PLACE, GATESHEAD, TYNE AND WEAR,

House, Upper Floor Bathroom with W/C, Private garden

REQUIRES: 3 Bedrooms House Preferred area: Harlow Green

for additional information see website or contact local office.



Ref no :336

Mutual Exchange Property

Landlord:Gateshead Housing Company

Beacon Lough Upper



Bedrooms 2

Penrith Gardens, Beacon Lough, Gateshead, NE9

House, Upper Floor Bathroom and Separate WC, Private garden

REQUIRES: 3 Bedrooms - 4 Bedrooms House, Bungalow Preferred area: Acquired Low Fell

for additional information see website or contact local office.



Ref no :14064

Mutual Exchange Property

Landlord:Gateshead Housing Company

Bensham Court Estate



Bedrooms 2

Bensham Court, Gateshead, NE8 1XX

3rd floor, Flat, Bathroom and W/C, No garden, Supported Housing

REQUIRES: 1 Bedroom Flat Preferred area: Bensham Court Estate

for additional information see website or contact local office.



Ref no :7316

Mutual Exchange Property

Landlord:Gateshead Housing Company

Benwell



Bedrooms 2

Violet Close, Benwell, Newcastle upon tyne, NE15

Ground Floor, House, Private garden

REQUIRES: 2 Bedrooms - 3 Bedrooms House Preferred area: Birtley West

for additional information see website or contact local office.



Ref no :114

Mutual Exchange Property

Landlord:Gateshead Housing Company

Benwell



Bedrooms 4

angel view, benwell, newcastle upon tyne, ne4 7ur

House, Bathroom and W/C, Private garden

REQUIRES: 4 Bedrooms House Preferred area: Kibblesworth

for additional information see website or contact local office.



Ref no :20219

Mutual Exchange Property

Landlord:Gateshead Housing Company

Biddick Hall



Bedrooms 2

priestley court, biddick hall, south shields, tyne and

House, Bathroom and W/C, Private garden

REQUIRES: 2 Bedrooms - 3 Bedrooms House Preferred area: Wardley

for additional information see website or contact local office.



Ref no :20443

Key



Number of bedrooms



Off road parking



Own garden



Shared Garden



No Garden



Pets permitted



Pets not permitted



Lift available



Supported housing

Mutual Exchange Property

Landlord: Gateshead Housing Company

Biddick Hall



Bedrooms 3

grays walk, biddick hall, south shields, ne34 9lt

Ground Floor, House, Bathroom and W/C, Private garden

REQUIRES: 3 Bedrooms - 4 Bedrooms House, Maisonette Preferred area: Stanhope Road

for additional information see website or contact local office.



Ref no :12477

Mutual Exchange Property

Landlord: Gateshead Housing Company

Bill Quay



Bedrooms 2

Wood Green, Bill Quay,, Gateshead, Tyne And Wear,

Ground Floor, House, Upper Floor Bathroom and Separate WC, Private garden

REQUIRES: 3 Bedrooms House Preferred area: Bill Quay

for additional information see website or contact local office.



Ref no :5333

Mutual Exchange Property

Landlord: Gateshead Housing Company

Bill Quay



Bedrooms 2

Woodgate Gardens, Bill Quay , Gateshead, Tyne &

2nd floor, House, Upper Floor Bathroom and Separate WC, Private garden

REQUIRES: 3 Bedrooms House Preferred area: Bill Quay

for additional information see website or contact local office.



Ref no :24783

Mutual Exchange Property

Landlord: Gateshead Housing Company

Birtley East



Bedrooms 2

leyburn place, birtley, dh3 1pl

House, Private garden

REQUIRES: 3 Bedrooms - 4 Bedrooms House Preferred area: Birtley East

for additional information see website or contact local office.



Ref no :20719

Mutual Exchange Property

Landlord: Gateshead Housing Company

Birtley East



Bedrooms 3

hillcroft, birtley, chester-le-street, dh3 1nd

1st floor, House, Upper Floor Bathroom with W/C, Private garden

REQUIRES: 2 Bedrooms - 3 Bedrooms House Preferred area: Birtley East

for additional information see website or contact local office.



Ref no :19986

Mutual Exchange Property

Landlord: Gateshead Housing Company

Birtley East



Bedrooms 3

Wilson Avenue, Birtley, Chester Le Street, DH3 1NU

2nd floor, House, Upper Floor Bathroom with W/C, Private garden

REQUIRES: 3 Bedrooms House Preferred area: Wrekenton

for additional information see website or contact local office.



Ref no :18558

Key



Number of bedrooms



Off road parking



Own garden



Shared Garden



No Garden



Pets permitted



Pets not permitted



Lift available



Supported housing

Mutual Exchange Property

Landlord: Gateshead Housing Company

Birtley East



Bedrooms 2

Rutland Square, Birtley, Chester-le-street, County

House, Check bathroom on viewing, Check garden on viewing

REQUIRES: 3 Bedrooms House Preferred area: Portmeads

for additional information see website or contact local office.



Ref no :16541

Mutual Exchange Property

Landlord: Gateshead Housing Company

Birtley East



Bedrooms 1

Selkirk Crescent, Birtley, Chester Le Street, DH3

House, Bathroom and W/C, Private garden

REQUIRES: 2 Bedrooms House Preferred area: Birtley East

for additional information see website or contact local office.



Ref no :16411

Mutual Exchange Property

Landlord: Gateshead Housing Company

Birtley East



Bedrooms 2

HIGHRIDGE, BIRTLEY, CHESTER-LE-STREET, DH3 1BE

House, Bathroom and W/C, Private garden, Adapted,

REQUIRES: 1 Bedroom - 2 Bedrooms House, Bungalow Preferred area: Birtley East

for additional information see website or contact local office.



Ref no :5618

Mutual Exchange Property

Landlord: Gateshead Housing Company

Birtley East



Bedrooms 3

Fell Cross, Birtley, Chester Le Street, DH3 1BQ

1st floor, House, Bathroom and W/C, Private garden

REQUIRES: 3 Bedrooms House Preferred area: Birtley East

for additional information see website or contact local office.



Ref no :4946

Mutual Exchange Property

Landlord: Gateshead Housing Company

Birtley East



Bedrooms 2

Highridge, Birtley, Chester Le Street, County

Ground Floor, House, Bathroom and W/C, Private garden

REQUIRES: 1 Bedroom - 2 Bedrooms Bungalow Preferred area: Birtley East

for additional information see website or contact local office.



Ref no :3131

Mutual Exchange Property

Landlord: Gateshead Housing Company

Birtley East



Bedrooms 2

RUTLAND SQUARE, BIRTLEY, CHESTER-LE-STREET,

Ground Floor, House, Bathroom and W/C, Private garden

REQUIRES: 2 Bedrooms House, Maisonette Preferred area: North Shields

for additional information see website or contact local office.



Ref no :949

Key



Number of bedrooms



Off road parking



Own garden



Shared Garden



No Garden



Pets permitted



Pets not permitted



Lift available



Supported housing

Mutual Exchange Property

Landlord: Gateshead Housing Company

Birtley East



Bedrooms 2

devon crescent, birtley, chester-le-street, co.

1st floor, House, Upper Floor Bathroom with W/C, Private garden

REQUIRES: 3 Bedrooms - 4 Bedrooms House Preferred area: Birtley East

for additional information see website or contact local office.



Ref no :2419

Mutual Exchange Property

Landlord: Gateshead Housing Company

Birtley East



Bedrooms 3

oliver cressent, birtley, chester le street, co durham,

House, Upper Floor Bathroom with WC and Ground Floor WC, Private garden

REQUIRES: 4 Bedrooms - 5 Bedrooms House Preferred area: Birtley West

for additional information see website or contact local office.



Ref no :6837

Mutual Exchange Property

Landlord: Gateshead Housing Company

Birtley East



Bedrooms 3

Birtley Villas, Birtley, Chester Le Street, DH3 1JX

Ground Floor, Maisonette, Bathroom and W/C, No garden

REQUIRES: 2 Bedrooms - 3 Bedrooms House Preferred area: Birtley East

for additional information see website or contact local office.



Ref no :8068

Mutual Exchange Property

Landlord: Gateshead Housing Company

Birtley East



Bedrooms 2

malone, gardens, birtley, dh31ql

1st floor, House, Upper Floor Bathroom with W/C, Private garden

REQUIRES: 3 Bedrooms House Preferred area: Birtley East

for additional information see website or contact local office.



Ref no :8035

Mutual Exchange Property

Landlord: Gateshead Housing Company

Birtley East



Bedrooms 2

,moore cres, birtley, chester-le-street, co durham,

House, Upper Floor Bathroom with WC and Ground Floor WC, Check garden on viewing

REQUIRES: 1 Bedroom - 2 Bedrooms Bungalow Preferred area: Kateregina Estate

for additional information see website or contact local office.



Ref no :8691

Mutual Exchange Property

Landlord: Gateshead Housing Company

Birtley East



Bedrooms 1

Lansbury Drive, Birtley, Chester-le-Street, DH3 1HL

1st floor, House, Upper Floor Bathroom with W/C and Separate W/C, Private garden

REQUIRES: 2 Bedrooms - 3 Bedrooms House, Bungalow, Maisonette, Park Home Preferred area: Birtley West

for additional information see website or contact local office.



Ref no :9108

Key



Number of bedrooms



Off road parking



Own garden



Shared Garden



No Garden



Pets permitted



Pets not permitted



Lift available



Supported housing

Mutual Exchange Property

Landlord: Gateshead Housing Company

Birtley East



Bedrooms 2

Devon Crescent, Birtley, Chester-Le-Street, DH3 1HR

House, Upper Floor Bathroom with W/C, Private garden

REQUIRES: 3 Bedrooms - 4 Bedrooms House Preferred area: Birtley East

for additional information see website or contact local office.



Ref no :13644

Mutual Exchange Property

Landlord: Gateshead Housing Company

Birtley East



Bedrooms 2

Lansbury Drive, Birtley, DH3 1JR

House, Bathroom and W/C, Private garden

REQUIRES: 3 Bedrooms - 4 Bedrooms House Preferred area: Birtley East

for additional information see website or contact local office.



Ref no :13421

Mutual Exchange Property

Landlord: Gateshead Housing Company

Birtley East



Bedrooms 2

Dorset Avenue, Birtley, Chester Le Street, DH3 2DU

Ground Floor, House, Upper Floor Bathroom with W/C and Separate W/C, Private garden

REQUIRES: 3 Bedrooms - 4 Bedrooms House Preferred area: Barley Mow New

for additional information see website or contact local office.



Ref no :13744

Mutual Exchange Property

Landlord: Gateshead Housing Company

Birtley East



Bedrooms 3

windsor road, birtley, dh3 1hy

Ground Floor, House, Private garden

REQUIRES: 2 Bedrooms - 3 Bedrooms House Preferred area: Allerdene

for additional information see website or contact local office.



Ref no :11859

Mutual Exchange Property

Landlord: Gateshead Housing Company

Birtley East



Bedrooms 3

Huddart Terrace, Birtley, Chester-le-Street, Co.

House, Upper Floor Bathroom with WC and Ground Floor WC, Private garden

REQUIRES: 3 Bedrooms - 4 Bedrooms House Preferred area: Northside

for additional information see website or contact local office.



Ref no :12345

Mutual Exchange Property

Landlord: Gateshead Housing Company

Birtley East



Bedrooms 2

sanders gardens, Birtley, Dh3 1na

1st floor, House, Bathroom and W/C, Private garden

REQUIRES: 2 Bedrooms - 3 Bedrooms House Preferred area: Millford/Ridgeway

for additional information see website or contact local office.



Ref no :12025

Key



Number of bedrooms



Off road parking



Own garden



Shared Garden



No Garden



Pets permitted



Pets not permitted



Lift available



Supported housing

Mutual Exchange Property

Landlord:Gateshead Housing Company

Birtley East



Bedrooms 2

Elisabeth Avenue, Birtley, CHESTER LE STREET, DH3

7th floor, House, Bathroom and W/C, Check garden on viewing

REQUIRES: 3 Bedrooms House Preferred area: Birtley East

for additional information see website or contact local office.



Ref no :10986

Mutual Exchange Property

Landlord:Gateshead Housing Company

Birtley East



Bedrooms 2

Elisabeth Avenue, Birtley, Chester Le Street, DH3

1st floor, House, Bathroom and W/C, Check garden on viewing

REQUIRES: 3 Bedrooms House Preferred area: Birtley East

for additional information see website or contact local office.



Ref no :11014

Mutual Exchange Property

Landlord:Gateshead Housing Company

Birtley East



Bedrooms 2

ELM TERRACE, BIRTLEY, DH31JQ

House, Private garden

REQUIRES: 3 Bedrooms - 4 Bedrooms House Preferred area: Wardley

for additional information see website or contact local office.



Ref no :9739

Mutual Exchange Property

Landlord:Gateshead Housing Company

Birtley West



Bedrooms 4

Elisabeth Avenue, Birtley, DH3 1HZ

House, Bathroom and W/C, Private garden

REQUIRES: 3 Bedrooms House Preferred area: Birtley East

for additional information see website or contact local office.



Ref no :9942

Mutual Exchange Property

Landlord:Gateshead Housing Company

Birtley West



Bedrooms 2

Windsor road, Birtley, Chester le street, Dh31hy

1st floor, House, Upper Floor Bathroom with W/C, Private garden

REQUIRES: 3 Bedrooms House Preferred area: Portmeads

for additional information see website or contact local office.



Ref no :12277

Mutual Exchange Property

Landlord:Gateshead Housing Company

Birtley West



Bedrooms 3

devon crescent, birtley, chester-le-street, co

1st floor, House, Ground Floor Bathroom with W/C, Private garden

REQUIRES: 2 Bedrooms - 3 Bedrooms House Preferred area: Barley Mow New

for additional information see website or contact local office.



Ref no :8102

Key



Number of bedrooms



Off road parking



Own garden



Shared Garden



No Garden



Pets permitted



Pets not permitted



Lift available



Supported housing

Mutual Exchange Property

Landlord:Gateshead Housing Company

Birtley West



Bedrooms 2

devin crescent, birtley, dh3 1hr

House, Upper Floor Bathroom with W/C, Private garden

REQUIRES: 2 Bedrooms - 3 Bedrooms House Preferred area: Allerdene

for additional information see website or contact local office.



Ref no :2118

Mutual Exchange Property

Landlord:Gateshead Housing Company

Birtley West



Bedrooms 3

Birtley Villas, Birtley, Chester-le-Street, County

3rd floor, Maisonette, Upper Floor Bathroom with WC and Ground Floor WC, No garden

REQUIRES: 2 Bedrooms House, Bungalow Preferred area: Birtley West

for additional information see website or contact local office.



Ref no :19573

Mutual Exchange Property

Landlord:Gateshead Housing Company

Bleach Green



Bedrooms 1

Mount Pleasant, Blaydon, Gateshead, NE21 6AA

Bungalow, Bathroom and W/C, Check garden on viewing, Adapted,

REQUIRES: 2 Bedrooms Bungalow Preferred area: Bleach Green

for additional information see website or contact local office.



Ref no :23540

Mutual Exchange Property

Landlord:Gateshead Housing Company

Bleach Green



Bedrooms 2

CONTENT STREET, GATESHEAD, NE21 5HX

1st floor, House, Bathroom and W/C, Check garden on viewing

REQUIRES: 3 Bedrooms House Preferred area: Watergate

for additional information see website or contact local office.



Ref no :2785

Mutual Exchange Property

Landlord:Gateshead Housing Company

Bleach Green



Bedrooms 3

Pickering Drive , Blaydon-on-Tyne, Tyne & Wear,

1st floor, House, Check bathroom on viewing, Check garden on viewing

REQUIRES: 3 Bedrooms House Preferred area: Hallgarth Estate

for additional information see website or contact local office.



Ref no :5368

Mutual Exchange Property

Landlord:Gateshead Housing Company

Bleach Green



Bedrooms 3

Denton View, Blaydon, ne21 4 dy

House, Bathroom and W/C, Private garden

REQUIRES: 3 Bedrooms House, Bungalow Preferred area: Byermoor

for additional information see website or contact local office.



Ref no :11576

Key



Number of bedrooms



Off road parking



Own garden



Shared Garden



No Garden



Pets permitted



Pets not permitted



Lift available



Supported housing

Mutual Exchange Property

Landlord: Gateshead Housing Company

Boghouse



Bedrooms 2

th cotgarth, felling, gateshead, ne10 9ut

Ground Floor, House, Bathroom and W/C, Private garden

REQUIRES: 3 Bedrooms - 4 Bedrooms House Preferred area: Boghouse

for additional information see website or contact local office.



Ref no :10836

Mutual Exchange Property

Landlord: Gateshead Housing Company

Boghouse



Bedrooms 2

the haynyng, gateshead, ne10 9dx

House, Upper Floor Bathroom with W/C, Private garden

REQUIRES: 3 Bedrooms House, Bungalow, Maisonette Preferred area: Boghouse

for additional information see website or contact local office.



Ref no :10793

Mutual Exchange Property

Landlord: Gateshead Housing Company

Boghouse



Bedrooms 3

willow grove, felling, gateshead, ne109pq

Ground Floor, House, Upper Floor Bathroom with WC and Ground Floor WC, Private garden

REQUIRES: 2 Bedrooms - 3 Bedrooms House Preferred area: Ellen Wilkinson Estate

for additional information see website or contact local office.



Ref no :353

Mutual Exchange Property

Landlord: Gateshead Housing Company

Boghouse



Bedrooms 2

CHILSIDE ROAD, GATESHEAD, TYNE AND WEAR,

House, Bathroom and W/C, Private garden

REQUIRES: 3 Bedrooms - 4 Bedrooms House Preferred area: Boghouse

for additional information see website or contact local office.



Ref no :53

Mutual Exchange Property

Landlord: Gateshead Housing Company

Boghouse



Bedrooms 3

SYCAMORE GROVE, GATESHEAD, TYNE AND WEAR,

Ground Floor, House, Upper Floor Bathroom with WC and Ground Floor WC, Private garden, Adapted,

REQUIRES: 4 Bedrooms - 5+ Bedrooms House Preferred area: Staneway Estate

for additional information see website or contact local office.



Ref no :33

Mutual Exchange Property

Landlord: Gateshead Housing Company

Boghouse



Bedrooms 2

Thornycroft, Gateshead, Tyne and Wear, NE10 9UU

House, Upper Floor Bathroom with W/C, Private garden

REQUIRES: 3 Bedrooms - 4 Bedrooms House Preferred area: Carr Hill

for additional information see website or contact local office.



Ref no :7095

Key



Number of bedrooms



Off road parking



Own garden



Shared Garden



No Garden



Pets permitted



Pets not permitted



Lift available



Supported housing

Mutual Exchange Property

Landlord: Gateshead Housing Company

Boghouse



Bedrooms 3

Heworth Burn Crescent, Gateshead, NE10 0PH

House, Upper Floor Bathroom and Separate WC, Private garden

REQUIRES: 2 Bedrooms Flat, Bungalow Preferred area: Felling

for additional information see website or contact local office.



Ref no :24907

Mutual Exchange Property

Landlord: Gateshead Housing Company

Boghouse



Bedrooms 2

Rowlandson Terrace, Felling, Gateshead, NE10 9PN

Ground Floor, Flat, Bathroom and W/C, Check garden on viewing

REQUIRES: 1 Bedroom - 2 Bedrooms Bungalow Preferred area: Boghouse

for additional information see website or contact local office.



Ref no :24664

Mutual Exchange Property

Landlord: Gateshead Housing Company

Boghouse



Bedrooms 4

sir godfrey, thompson court , felling, ne100bq

1st floor, Maisonette, Upper Floor Bathroom and Separate WC, Communal garden

REQUIRES: 3 Bedrooms - 4 Bedrooms House Preferred area: Felling

for additional information see website or contact local office.



Ref no :25061

Mutual Exchange Property

Landlord: Gateshead Housing Company

Boghouse



Bedrooms 2

Monksfeld, Felling, Gateshead, NE10 9UP

House, Bathroom and W/C, Private garden

REQUIRES: 3 Bedrooms House Preferred area: Ellen Wilkinson Estate

for additional information see website or contact local office.



Ref no :25281

Mutual Exchange Property

Landlord: Gateshead Housing Company

Boghouse



Bedrooms 2

HEWORTH BURN CRESCENT, FELLING, GATESHEAD,

House, Bathroom and W/C, Private garden

REQUIRES: 3 Bedrooms - 4 Bedrooms House Preferred area: Boghouse

for additional information see website or contact local office.



Ref no :16408

Mutual Exchange Property

Landlord: Gateshead Housing Company

Boghouse



Bedrooms 1

Yetholm Road, Gateshead, NE8 2QJ

Ground Floor, Bungalow, Bathroom and W/C, Communal garden, Adapted,

REQUIRES: 2 Bedrooms Flat, Bungalow Preferred area: Boghouse

for additional information see website or contact local office.



Ref no :17351

Key



Number of bedrooms



Off road parking



Own garden



Shared Garden



No Garden



Pets permitted



Pets not permitted



Lift available



Supported housing

Mutual Exchange Property

Landlord: Gateshead Housing Company

Byker Trust



Bedrooms 2

Headlam Street, Newcastle Upon Tyne, NE6 1EB

Ground Floor, House, Upper Floor Bathroom with W/C, Private garden

REQUIRES: 2 Bedrooms - 3 Bedrooms House, Flat Preferred area: Killingworth

for additional information see website or contact local office.



Ref no :20272

Mutual Exchange Property

Landlord: Gateshead Housing Company

Carr Hill



Bedrooms 2

Broadway, Carr Hill, Gateshead, NE9 5QB

4th floor, House, Upper Floor Bathroom with W/C, Private garden

REQUIRES: 3 Bedrooms - 4 Bedrooms House Preferred area: Sheriff Hill

for additional information see website or contact local office.



Ref no :20389

Mutual Exchange Property

Landlord: Gateshead Housing Company

Carr Hill



Bedrooms 3

carrhill road, carrhill, gateshead, ne95nd

1st floor, House, Ground Floor Bathroom with Separate WC, Private garden

REQUIRES: 3 Bedrooms - 4 Bedrooms House Preferred area: High Lanes Estate

for additional information see website or contact local office.



Ref no :19350

Mutual Exchange Property

Landlord: Gateshead Housing Company

Carr Hill



Bedrooms 2

millway, gateshead, ne9 5pr

Ground Floor, House, Upper Floor Bathroom and Separate WC, Private garden

REQUIRES: 2 Bedrooms - 3 Bedrooms House Preferred area: Fenham

for additional information see website or contact local office.



Ref no :19299

Mutual Exchange Property

Landlord: Gateshead Housing Company

Carr Hill



Bedrooms 2

Montrose Crescent, Carr Hill, Gateshead, NE9 5NN

House, Ground Floor Bathroom with Separate WC, Private garden

REQUIRES: 2 Bedrooms House Preferred area: Lukes Lane

for additional information see website or contact local office.



Ref no :20844

Mutual Exchange Property

Landlord: Gateshead Housing Company

Carr Hill



Bedrooms 2

romney gardens, Gateshead, Tyne and Wear, NE9

Ground Floor, House, Upper Floor Bathroom with W/C, Private garden

REQUIRES: 3 Bedrooms House Preferred area: Sheriff Hill

for additional information see website or contact local office.



Ref no :22819

Key



Number of bedrooms



Off road parking



Own garden



Shared Garden



No Garden



Pets permitted



Pets not permitted



Lift available



Supported housing

Mutual Exchange Property

Landlord:Gateshead Housing Company

Carr Hill



Bedrooms 3

Romford Place, Gateshead, NE9 5NE

House, Bathroom and W/C, Check garden on viewing

REQUIRES: 3 Bedrooms - 4 Bedrooms House Preferred area: Worcester Green Estate

for additional information see website or contact local office.



Ref no :8204

Mutual Exchange Property

Landlord:Gateshead Housing Company

Carr Hill



Bedrooms 2

hodkin gardens, carrhill gateshead tyne+wear,

2nd floor, House, Upper Floor Bathroom and Separate WC, Private garden

REQUIRES: 2 Bedrooms - 3 Bedrooms Flat Preferred area: Birtley East

for additional information see website or contact local office.



Ref no :9079

Mutual Exchange Property

Landlord:Gateshead Housing Company

Carr Hill



Bedrooms 2

Carr Hill Road, Gateshead, Tyne and Wear, NE9 5ND

House, Ground Floor Bathroom with Separate WC, Private garden

REQUIRES: 2 Bedrooms - 3 Bedrooms House Preferred area: Deckham Estate

for additional information see website or contact local office.



Ref no :1331

Mutual Exchange Property

Landlord:Gateshead Housing Company

Carr Hill



Bedrooms 2

Carr Hill Road, Gateshead, NE9 5ND

Ground Floor, House, Ground Floor Bathroom with Separate WC, Check garden on viewing

REQUIRES: 2 Bedrooms House Preferred area: Worcester Green Estate

for additional information see website or contact local office.



Ref no :1681

Mutual Exchange Property

Landlord:Gateshead Housing Company

Carr Hill



Bedrooms 2

Strathmore Road, Gatehead, NE9 5NQ

2nd floor, House, Ground Floor Bathroom with Separate WC, Private garden

REQUIRES: 2 Bedrooms - 3 Bedrooms House Preferred area: Boghouse

for additional information see website or contact local office.



Ref no :5790

Mutual Exchange Property

Landlord:Gateshead Housing Company

Carr Hill



Bedrooms 2

hodkin gardens, Windy nook, Gateshead, Tyne and

House, Bathroom and W/C, Private garden

REQUIRES: 3 Bedrooms - 4 Bedrooms House Preferred area: Sheriff Hill

for additional information see website or contact local office.



Ref no :3199

Key



Number of bedrooms



Off road parking



Own garden



Shared Garden



No Garden



Pets permitted



Pets not permitted



Lift available



Supported housing

Mutual Exchange Property

Landlord:Gateshead Housing Company

Carr Hill



Bedrooms 2

, MONTROSE CRESCENT, GATESHEAD, TYNE AND

House, Bathroom and W/C, Private garden

REQUIRES: 3 Bedrooms - 4 Bedrooms House Preferred area: Redemارش Estate

for additional information see website or contact local office.



Ref no :10080

Mutual Exchange Property

Landlord:Gateshead Housing Company

Carr Hill



Bedrooms 2

Landseer Gardens, Carr Hill, Gateshead, Tyne &

House, Upper Floor Bathroom with W/C, Private garden

REQUIRES: 3 Bedrooms House Preferred area: Sheriff Hill

for additional information see website or contact local office.



Ref no :11437

Mutual Exchange Property

Landlord:Gateshead Housing Company

Carr Hill



Bedrooms 2

wardill gardens, sherif hill, ne9 5nh

House, Upper Floor Bathroom with W/C, Private garden

REQUIRES: 2 Bedrooms - 3 Bedrooms House Preferred area: Springwell

for additional information see website or contact local office.



Ref no :12016

Mutual Exchange Property

Landlord:Gateshead Housing Company

Carr Hill



Bedrooms 2

Athol gardens, Carr hill, Gateshead, Tyne and Wear,

Ground Floor, House, Upper Floor Bathroom and Separate WC, Private garden

REQUIRES: 3 Bedrooms - 4 Bedrooms House Preferred area: Felling

for additional information see website or contact local office.



Ref no :13852

Mutual Exchange Property

Landlord:Gateshead Housing Company

Carr Hill



Bedrooms 2

Strathmore road, carr hill , Gateshead, ne9 5nq

House, Ground Floor Bathroom with Separate WC, Private garden

REQUIRES: 2 Bedrooms - 3 Bedrooms House Preferred area: Acquired Low Fell

for additional information see website or contact local office.



Ref no :15247

Mutual Exchange Property

Landlord:Gateshead Housing Company

Carr Hill



Bedrooms 2

Athol gardens, Carr hill , Gateshead, Tyne and wear,

Ground Floor, House, Upper Floor Bathroom and Separate WC, Private garden

REQUIRES: 3 Bedrooms - 4 Bedrooms House Preferred area: Carr Hill

for additional information see website or contact local office.



Ref no :15371

Key



Number of bedrooms



Off road parking



Own garden



Shared Garden



No Garden



Pets permitted



Pets not permitted



Lift available



Supported housing

Mutual Exchange Property

Landlord: Gateshead Housing Company

Castle Park



Bedrooms 1

Castle Square, Backworth, Newcastle upon Tyne,

Ground Floor, Bungalow, Bathroom and W/C, Private garden

REQUIRES: 1 Bedroom Flat, Bungalow, Maisonette Preferred area: High Farm North

for additional information see website or contact local office.



Ref no :3664

Mutual Exchange Property

Landlord: Gateshead Housing Company

Cedars Green Estate



Bedrooms 3

cedars green, gateshead, tyne and wear, ne9 6qe

Ground Floor, House, Upper Floor Bathroom and Separate WC, Private garden

REQUIRES: 3 Bedrooms - 4 Bedrooms House Preferred area: Kibblesworth

for additional information see website or contact local office.



Ref no :8198

Mutual Exchange Property

Landlord: Gateshead Housing Company

Centurion Way Estate



Bedrooms 3

centurion. way, sheriff hill, gateshead, tyne and

1st floor, House, Bathroom and W/C, Check garden on viewing

REQUIRES: 2 Bedrooms House Preferred area: Sheriff Hill

for additional information see website or contact local office.



Ref no :17479

Mutual Exchange Property

Landlord: Gateshead Housing Company

Centurion Way Estate



Bedrooms 1

Queen Elizabeth Avenue, Gateshead, NE9 6RE

Ground Floor, Bungalow, Private garden

REQUIRES: 1 Bedroom Bungalow Preferred area: Acquired Low Fell

for additional information see website or contact local office.



Ref no :17779

Mutual Exchange Property

Landlord: Gateshead Housing Company

Chandless



Bedrooms 3

Cathedral Court, Gateshead, NE8 3JR

Ground Floor, Maisonette, Upper Floor Bathroom and Separate WC, Private garden

REQUIRES: 2 Bedrooms - 3 Bedrooms House, Maisonette Preferred area: Fawdon

for additional information see website or contact local office.

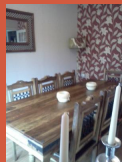


Ref no :2384

Mutual Exchange Property

Landlord: Gateshead Housing Company

Chopwell



Bedrooms 3

Moorland View, Chopwell, Newcastle upon Tyne,

House, Upper Floor Bathroom with WC and Ground Floor WC, Private garden

REQUIRES: 3 Bedrooms House Preferred area: Lower Rowlands Gill

for additional information see website or contact local office.



Ref no :322

Key



Number of bedrooms



Off road parking



Own garden



Shared Garden



No Garden



Pets permitted



Pets not permitted



Lift available



Supported housing

Mutual Exchange Property

Landlord: Gateshead Housing Company

Chopwell



Bedrooms 3

Woodside Terrace, Chopwell, Newcastle Upon Tyne,

House, Bathroom and W/C, Private garden

REQUIRES: 3 Bedrooms House Preferred area: Parkhead

for additional information see website or contact local office.



Ref no :4884

Mutual Exchange Property

Landlord: Gateshead Housing Company

Chopwell



Bedrooms 3

Owen Terrace, Newcastle upon Tyne, NE17 7EL

House, Upper Floor Bathroom with WC and Ground Floor WC, Private garden

REQUIRES: 1 Bedroom - 2 Bedrooms House, Bungalow Preferred area: Chopwell

for additional information see website or contact local office.



Ref no :7898

Mutual Exchange Property

Landlord: Gateshead Housing Company

Chopwell



Bedrooms 3

peartree terrace, chopwell, tyne and wear, ne17 7et

Ground Floor, House, Upper Floor Bathroom with W/C, Private garden

REQUIRES: 3 Bedrooms - 4 Bedrooms House Preferred area: Ryton Central

for additional information see website or contact local office.



Ref no :8040

Mutual Exchange Property

Landlord: Gateshead Housing Company

Chopwell



Bedrooms 2

Marx Terrace, Chopwell, Tyne & Wear, NE17 7EH

House, Bathroom and W/C, Private garden

REQUIRES: 2 Bedrooms House Preferred area: Low Crawcrook

for additional information see website or contact local office.



Ref no :14189

Mutual Exchange Property

Landlord: Gateshead Housing Company

Chopwell



Bedrooms 3

moorland view, Chopwell, Newcastle, Upon Tyne,

House, Upper Floor Bathroom with WC and Ground Floor WC, Private garden

REQUIRES: 3 Bedrooms - 4 Bedrooms House, Bungalow Preferred area: Sunnyside

for additional information see website or contact local office.



Ref no :15710

Mutual Exchange Property

Landlord: Gateshead Housing Company

Chopwell



Bedrooms 2

wear street, chopwell, newcastle, tyne and wear,

House, Ground Floor Bathroom with W/C, No garden

REQUIRES: 2 Bedrooms - 4 Bedrooms House, Bungalow Preferred area: Chopwell

for additional information see website or contact local office.



Ref no :22324

Key



Number of bedrooms



Off road parking



Own garden



Shared Garden



No Garden



Pets permitted



Pets not permitted



Lift available



Supported housing

Mutual Exchange Property

Landlord: Gateshead Housing Company

Chopwell



Bedrooms 3

Moorland View, Chopwell, NE17 7EX

House, Upper Floor Bathroom with WC and Ground Floor WC, Private garden

REQUIRES: 4 Bedrooms - 5 Bedrooms House Preferred area: High Howdon

for additional information see website or contact local office.



Ref no :20750

Mutual Exchange Property

Landlord: Gateshead Housing Company

Chopwell Gardens Estate



Bedrooms 1

chopwell gardens, wreckenton, gateshead, ne97qe

Ground Floor, Flat, Ground Floor Bathroom with W/C, Check garden on viewing

REQUIRES: 2 Bedrooms House Preferred area: Vigo

for additional information see website or contact local office.



Ref no :22233

Mutual Exchange Property

Landlord: Gateshead Housing Company

Chopwell Gardens Estate



Bedrooms 1

Chopwell Gardens, Gateshead, NE9 7QA

Ground Floor, Bungalow, Bathroom and W/C, Private garden

REQUIRES: 1 Bedroom - 2 Bedrooms Flat, Bungalow Preferred area: Eighton Banks

for additional information see website or contact local office.



Ref no :21373

Mutual Exchange Property

Landlord: Gateshead Housing Company

Chopwell Gardens Estate



Bedrooms 2

chopwell gardens, wreckenton, gateshead, ne9 7dq

1st floor, Flat, Bathroom and W/C, Private garden

REQUIRES: 2 Bedrooms House Preferred area: Springwell

for additional information see website or contact local office.



Ref no :18626

Mutual Exchange Property

Landlord: Gateshead Housing Company

Claremont



Bedrooms 2

claremont walk, gateshead, tyne and wear, ne8 1tw

1st floor, Flat, Bathroom and W/C, Communal garden

REQUIRES: 2 Bedrooms House, Bungalow Preferred area: Claremont

for additional information see website or contact local office.



Ref no :19606

Mutual Exchange Property

Landlord: Gateshead Housing Company

Claremont



Bedrooms 2

Cotfield Walk, Bensham, Gateshead, NE8 1TG

1st floor, Flat, Bathroom and W/C, Communal garden

REQUIRES: 1 Bedroom Flat, Bungalow, Studio flat, Maisonette, Park Home Preferred area: Fenham

for additional information see website or contact local office.



Ref no :3120

Key



Number of bedrooms



Off road parking



Own garden



Shared Garden



No Garden



Pets permitted



Pets not permitted



Lift available



Supported housing

Mutual Exchange Property

Landlord: Gateshead Housing Company

Clasper Village



Bedrooms 2

rose street, Teams, Gateshead , Tyne and Wear,
Ground Floor, Flat, Bathroom and W/C, Check garden on viewing

REQUIRES: 2 Bedrooms - 3 Bedrooms House Preferred area: Ravensworth Road Estate

for additional information see website or contact local office.



Ref no :7043

Mutual Exchange Property

Landlord: Gateshead Housing Company

Coach Road Estate



Bedrooms 2

Mendip Gardens, Gateshead, NE11 9LN

Ground Floor, Maisonette, Bathroom and W/C, Communal garden

REQUIRES: 2 Bedrooms - 3 Bedrooms House Preferred area: Lobley Hill

for additional information see website or contact local office.



Ref no :10694

Mutual Exchange Property

Landlord: Gateshead Housing Company

Coatsworth



Bedrooms 2

havelock close, gateshead, tyne and wear, ne81qx

1st floor, Flat, Bathroom and W/C, No garden

REQUIRES: 2 Bedrooms House, Bungalow Preferred area: Lyndhurst Upper

for additional information see website or contact local office.



Ref no :15509

Mutual Exchange Property

Landlord: Gateshead Housing Company

Coatsworth



Bedrooms 2

Coatsworth Court, Gateshead, NE8 1QS

1st floor, Flat, Check bathroom on viewing, No garden

REQUIRES: 1 Bedroom - 2 Bedrooms House, Flat Preferred area: Victoria

for additional information see website or contact local office.



Ref no :22838

Mutual Exchange Property

Landlord: Gateshead Housing Company

Crookhill



Bedrooms 2

, HARDMAN GARDENS, RYTON, TYNE AND WEAR,

Bungalow, Bathroom and W/C, No garden

REQUIRES: 1 Bedroom - 2 Bedrooms House, Flat, Bungalow Preferred area: Whickham North Estate

for additional information see website or contact local office.



Ref no :23110

Mutual Exchange Property

Landlord: Gateshead Housing Company

Crookhill



Bedrooms 4

Tyne Gardens, Ryton, Tyne and Wear, NE40 3DP

Ground Floor, House, Bathroom and W/C, Private garden

REQUIRES: 3 Bedrooms House Preferred area: High Greenside

for additional information see website or contact local office.



Ref no :19964

Key



Number of bedrooms



Off road parking



Own garden



Shared Garden



No Garden



Pets permitted



Pets not permitted



Lift available



Supported housing

Mutual Exchange Property

Landlord: Gateshead Housing Company

Crookhill



Bedrooms 4

Tyne Gardens, Ryton, NE40 3DP

House, Upper Floor Bathroom with W/C, Check garden on viewing

REQUIRES: 3 Bedrooms House Preferred area: Pipebridge

for additional information see website or contact local office.



Ref no :20167

Mutual Exchange Property

Landlord: Gateshead Housing Company

Crookhill



Bedrooms 4

Tyne Gardens, Crookhill, Ryton, Tyne and Wear,

House, Upper Floor Bathroom with WC and Ground Floor WC, Private garden

REQUIRES: 2 Bedrooms House Preferred area: Ryton Central

for additional information see website or contact local office.



Ref no :18485

Mutual Exchange Property

Landlord: Gateshead Housing Company

Crookhill



Bedrooms 2

TYNE GARDENS, Ryton, TYNE AND WEAR, NE403DR

2nd floor, House, Shared bathroom, Check garden on viewing

REQUIRES: 3 Bedrooms House Preferred area: Crookhill

for additional information see website or contact local office.



Ref no :18130

Mutual Exchange Property

Landlord: Gateshead Housing Company

Crookhill



Bedrooms 1

heddon close, ryton, gateshead, ne40 3ja

Ground Floor, Flat, Bathroom and W/C, Check garden on viewing

REQUIRES: 2 Bedrooms House, Flat, Bungalow, Studio flat, Maisonette, Park Home Preferred area: Parkhead

for additional information see website or contact local office.



Ref no :13414

Mutual Exchange Property

Landlord: Gateshead Housing Company

Crookhill



Bedrooms 3

Park View Garden, Ryton, Gateshead, NE40 3JF

Ground Floor, House, Bathroom and W/C, Private garden, Adapted,

REQUIRES: 2 Bedrooms - 3 Bedrooms House Preferred area: High Greenside

for additional information see website or contact local office.



Ref no :9176

Mutual Exchange Property

Landlord: Gateshead Housing Company

Crowhall Towers Estate



Bedrooms 2

Crowhall Towers, Gateshead, NE10 ONF

1st floor, Flat, Check bathroom on viewing, No garden

REQUIRES: 2 Bedrooms House, Flat Preferred area: Windy Nook

for additional information see website or contact local office.



Ref no :1227

Key



Number of bedrooms



Off road parking



Own garden



Shared Garden



No Garden



Pets permitted



Pets not permitted



Lift available



Supported housing

Mutual Exchange Property

Landlord: Gateshead Housing Company

Crowhall Towers Estate



Bedrooms 3

Sir Godfrey Thomson Court, Gateshead, NE10 0BQ

1st floor, Maisonette, Upper Floor Bathroom and Separate WC, No garden

REQUIRES: 2 Bedrooms House, Maisonette Preferred area: Felling

for additional information see website or contact local office.



Ref no :22633

Mutual Exchange Property

Landlord: Gateshead Housing Company

Deckham Estate



Bedrooms 3

Romford place, Gateshead, Ne9 5ne

House, Upper Floor Shower and W/C, Check garden on viewing, Adapted,

REQUIRES: 3 Bedrooms - 4 Bedrooms Bungalow Preferred area: Whickham North Estate

for additional information see website or contact local office.



Ref no :22209

Mutual Exchange Property

Landlord: Gateshead Housing Company

Deckham Estate



Bedrooms 2

Kingston Road, Gateshead, NE8 3UH

Ground Floor, Flat, Bathroom and W/C, Communal garden

REQUIRES: 2 Bedrooms House, Flat Preferred area: Derwentwater

for additional information see website or contact local office.



Ref no :21597

Mutual Exchange Property

Landlord: Gateshead Housing Company

Deckham Estate



Bedrooms 3

Ettrick Gardens, Deckham, Gateshead, Tyne & Wear,

House, Upper Floor Bathroom and Separate WC, Check garden on viewing

REQUIRES: 3 Bedrooms - 4 Bedrooms House Preferred area: Wardley

for additional information see website or contact local office.



Ref no :20920

Mutual Exchange Property

Landlord: Gateshead Housing Company

Deckham Estate



Bedrooms 2

STRATHMORE ROAD, GATESHEAD, TYNE AND WEAR,

House, Ground Floor Bathroom with Separate WC, Private garden

REQUIRES: 3 Bedrooms House Preferred area: Beacon Lough East

for additional information see website or contact local office.



Ref no :20194

Mutual Exchange Property

Landlord: Gateshead Housing Company

Deckham Estate



Bedrooms 2

highcliffe gardens, gateshead, tyne and wear, ne8

House, Upper Floor Bathroom and Separate WC, No garden

REQUIRES: 3 Bedrooms House Preferred area: Lobley Hill

for additional information see website or contact local office.



Ref no :16855

Key



Number of bedrooms



Off road parking



Own garden



Shared Garden



No Garden



Pets permitted



Pets not permitted



Lift available



Supported housing

Mutual Exchange Property

Landlord: Gateshead Housing Company

Deckham Estate



Bedrooms 2

26ife street Gateshead , 26ife street Gateshead ,

1st floor, Flat, Bathroom and W/C, Check garden on viewing

REQUIRES: 3 Bedrooms - 2 Bedrooms House Preferred area: Deckham Estate

for additional information see website or contact local office.



Ref no :24991

Mutual Exchange Property

Landlord: Gateshead Housing Company

Deckham Estate



Bedrooms 3

milvain close, Deckham, Gatehead, Ne8 3rs

House, Upper Floor Bathroom with W/C and Separate W/C, Check garden on viewing

REQUIRES: 3 Bedrooms - 5+ Bedrooms House Preferred area: Acquired Low Fell

for additional information see website or contact local office.



Ref no :1725

Mutual Exchange Property

Landlord: Gateshead Housing Company

Deckham Estate



Bedrooms 2

Durham Place, Gateshead , Tyne & Wear, NE8 3TP

1st floor, Flat, Bathroom and W/C, No garden, Adapted,

REQUIRES: 2 Bedrooms - 3 Bedrooms House, Bungalow Preferred area: Wardley

for additional information see website or contact local office.



Ref no :2158

Mutual Exchange Property

Landlord: Gateshead Housing Company

Deckham Estate



Bedrooms 2

Mersey Place, Deckham , Gateshead, NE8 3ST

Ground Floor, Flat, Bathroom and W/C, Communal garden

REQUIRES: 2 Bedrooms House, Flat Preferred area: Eighton Banks

for additional information see website or contact local office.



Ref no :3810

Mutual Exchange Property

Landlord: Gateshead Housing Company

Deckham Estate



Bedrooms 2

carr hill rd, deckham, gateshead, ne95nb

Ground Floor, House, Bathroom and W/C, Private garden

REQUIRES: 2 Bedrooms House Preferred area: Whickham North Estate

for additional information see website or contact local office.



Ref no :7094

Mutual Exchange Property

Landlord: Gateshead Housing Company

Deckham Estate



Bedrooms 1

Rosebery Avenue, Gateshead, NE8 3XB

Ground Floor, Flat, No garden

REQUIRES: 2 Bedrooms House, Flat, Bungalow, Maisonette Preferred area: North Shields

for additional information see website or contact local office.



Ref no :6032

Key



Number of bedrooms



Off road parking



Own garden



Shared Garden



No Garden



Pets permitted



Pets not permitted



Lift available



Supported housing

Mutual Exchange Property

Landlord: Gateshead Housing Company

Deckham Estate



Bedrooms 2

fiife street, gateshead, tyne and wear, ne8 3rr

1st floor, Flat, Bathroom and W/C, Communal garden

REQUIRES: 1 Bedroom House, Flat, Bungalow Preferred area: Deckham Estate

for additional information see website or contact local office.



Ref no :13245

Mutual Exchange Property

Landlord: Gateshead Housing Company

Deckham Estate



Bedrooms 3

trent gardens deckham gateshead, 6Trent gardens

Ground Floor, House, Check garden on viewing

REQUIRES: 2 Bedrooms House Preferred area: Abbey Court Estate

for additional information see website or contact local office.



Ref no :13299

Mutual Exchange Property

Landlord: Gateshead Housing Company

Deckham Estate



Bedrooms 2

Carr Hill Road, Gateshead, Tyne And Wear, NE9 5NB

Ground Floor, House, Upper Floor Bathroom with W/C, Private garden

REQUIRES: 2 Bedrooms House Preferred area: Lobley Hill

for additional information see website or contact local office.



Ref no :14653

Mutual Exchange Property

Landlord: Gateshead Housing Company

Deckham Estate



Bedrooms 3

Humber Gardens, Deckham, Gateshead, NE8 3SJ

Ground Floor, House, Upper Floor Bathroom and Separate WC, Private garden

REQUIRES: 4 Bedrooms House, Maisonette Preferred area: Sunderland Road Estate

for additional information see website or contact local office.



Ref no :14040

Mutual Exchange Property

Landlord: Gateshead Housing Company

Deckham Estate



Bedrooms 3

Carr Hill Road, Gateshead, NE9 5LS

House, Ground Floor Bathroom with W/C, Private garden

REQUIRES: 3 Bedrooms House Preferred area: Dunston Hill Estate

for additional information see website or contact local office.



Ref no :9886

Mutual Exchange Property

Landlord: Gateshead Housing Company

Deckham Estate



Bedrooms 2

Montrose Crescent, Carr Hill, Gateshead, NE9 5NN

House, Ground Floor Bathroom with Separate WC, Private garden

REQUIRES: 2 Bedrooms House Preferred area: Deckham Estate

for additional information see website or contact local office.



Ref no :9733

Key



Number of bedrooms



Off road parking



Own garden



Shared Garden



No Garden



Pets permitted



Pets not permitted



Lift available



Supported housing

Mutual Exchange Property

Landlord:Gateshead Housing Company

Derwentwater



Bedrooms 1

Marian Court, Gateshead, NE8 2HX

Ground Floor, Flat, Bathroom and W/C, Check garden on viewing

REQUIRES: 2 Bedrooms - 3 Bedrooms House Preferred area: Dunston Road Estate

for additional information see website or contact local office.



Ref no :6112

Mutual Exchange Property

Landlord:Gateshead Housing Company

Derwentwater



Bedrooms 1

, Derwentwater Court, Derwentwater Road,

Ground Floor, Flat, Bathroom and W/C, Communal garden

REQUIRES: 1 Bedroom - 2 Bedrooms House, Flat Preferred area: Portmeads

for additional information see website or contact local office.



Ref no :21232

Mutual Exchange Property

Landlord:Gateshead Housing Company

Dunston Hill Estate



Bedrooms 3

oak avenue, dunston, gateshead, tyne and wear,

1st floor, Flat, Bathroom and W/C, Check garden on viewing

REQUIRES: 2 Bedrooms House Preferred area: Dunston Hill Estate

for additional information see website or contact local office.



Ref no :22881

Mutual Exchange Property

Landlord:Gateshead Housing Company

Dunston Hill Estate



Bedrooms 2

braeside, dunston , ne119rh

House, Check bathroom on viewing, Check garden on viewing

REQUIRES: 2 Bedrooms House Preferred area: Whickham North Estate

for additional information see website or contact local office.



Ref no :16904

Mutual Exchange Property

Landlord:Gateshead Housing Company

Dunston Hill Estate



Bedrooms 2

knightside gardens, dunston, gateshead, tyne and

House, Bathroom and W/C, Private garden

REQUIRES: 3 Bedrooms - 4 Bedrooms House Preferred area: Dunston Hill Estate

for additional information see website or contact local office.



Ref no :25138

Mutual Exchange Property

Landlord:Gateshead Housing Company

Dunston Hill Estate



Bedrooms 2

Poplar Crescent, Gateshead, NE11 9US

Ground Floor, Flat, Check bathroom on viewing, Private garden, Adapted,

REQUIRES: 3 Bedrooms House, Bungalow Preferred area: Dunston Hill Estate

for additional information see website or contact local office.



Ref no :23759

Key



Number of bedrooms



Off road parking



Own garden



Shared Garden



No Garden



Pets permitted



Pets not permitted



Lift available



Supported housing

Mutual Exchange Property

Landlord: Gateshead Housing Company

Dunston Hill Estate



Bedrooms 3

oak avenue, dunston , NE11 9UR

2nd floor, Flat, Check bathroom on viewing, Check garden on viewing

REQUIRES: 2 Bedrooms House Preferred area: Vigo

for additional information see website or contact local office.



Ref no :9887

Mutual Exchange Property

Landlord: Gateshead Housing Company

Dunston Hill Estate



Bedrooms 3

Holly Avenue, Dunston, Gateshead, NE11 9UT

1st floor, Flat, Bathroom and W/C, Check garden on viewing

REQUIRES: 2 Bedrooms Flat, Bungalow Preferred area: St Mary's Green Estate

for additional information see website or contact local office.



Ref no :11245

Mutual Exchange Property

Landlord: Gateshead Housing Company

Dunston Hill Estate



Bedrooms 2

braeside, dunston, ne119rh

Maisonette, Check bathroom on viewing, Check garden on viewing

REQUIRES: 2 Bedrooms - 3 Bedrooms House Preferred area: Swalwell

for additional information see website or contact local office.



Ref no :15112

Mutual Exchange Property

Landlord: Gateshead Housing Company

Dunston Park Estate



Bedrooms 3

oak avenue, dunston, gateshead, tyne and wear,

2nd floor, Flat, Upper Floor Bathroom and Separate WC, Private garden

REQUIRES: 2 Bedrooms - 3 Bedrooms House, Flat Preferred area: St Mary's Green Estate

for additional information see website or contact local office.



Ref no :14885

Mutual Exchange Property

Landlord: Gateshead Housing Company

Dunston Park Estate



Bedrooms 2

lister ave, dunston, gateshead, ne119er

House, Upper Floor Bathroom with W/C, Private garden

REQUIRES: 3 Bedrooms - 4 Bedrooms House Preferred area: Holmeside

for additional information see website or contact local office.



Ref no :10691

Mutual Exchange Property

Landlord: Gateshead Housing Company

Dunston Park Estate



Bedrooms 1

beech drive, dunston, gateshead, tyne wear, ne11

Ground Floor, Bungalow, Ground Floor Bathroom with Separate WC, Check garden on viewing

REQUIRES: 2 Bedrooms - 3 Bedrooms Bungalow Preferred area: Wickham North Estate

for additional information see website or contact local office.



Ref no :11160

Key



Number of bedrooms



Off road parking



Own garden



Shared Garden



No Garden



Pets permitted



Pets not permitted



Lift available



Supported housing

Mutual Exchange Property

Landlord:Gateshead Housing Company

Dunston Park Estate



Bedrooms 2

Buchanan Green, Dunston, Gateshead , Tyne and

Ground Floor, Maisonette, Check garden on viewing

REQUIRES: 2 Bedrooms - 3 Bedrooms House, Flat, Bungalow, Maisonette Preferred area: Allerdene

for additional information see website or contact local office.



Ref no :11438

Mutual Exchange Property

Landlord:Gateshead Housing Company

Dunston Park Estate



Bedrooms 2

Ross Avenue, Gateshead, NE11 9EQ

House, Upper Floor Bathroom with W/C, Check garden on viewing

REQUIRES: 3 Bedrooms - 4 Bedrooms House Preferred area: Dunston Hill Estate

for additional information see website or contact local office.



Ref no :6425

Mutual Exchange Property

Landlord:Gateshead Housing Company

Dunston Park Estate



Bedrooms 2

Meadow Lane, Gateshead, NE11 9PP

Ground Floor, House, Bathroom and W/C, Private garden

REQUIRES: 3 Bedrooms - 4 Bedrooms House Preferred area: Lobley Hill

for additional information see website or contact local office.



Ref no :1574

Mutual Exchange Property

Landlord:Gateshead Housing Company

Dunston Park Estate



Bedrooms 2

BARRY STREET, DUNSTON, GATESHEAD, NE119AS

House, Ground Floor Bathroom with Separate WC, Check garden on viewing

REQUIRES: 2 Bedrooms - 4 Bedrooms House Preferred area: Dunston Hill Estate

for additional information see website or contact local office.



Ref no :15661

Mutual Exchange Property

Landlord:Gateshead Housing Company

Dunston Park Estate



Bedrooms 2

Renforth Street, Dunston, Gateshead, NE11 9BE

1st floor, Flat, Bathroom and W/C, No garden

REQUIRES: 3 Bedrooms House Preferred area: Ravensworth Road Estate

for additional information see website or contact local office.



Ref no :18989

Mutual Exchange Property

Landlord:Gateshead Housing Company

Dunston Park Estate



Bedrooms 1

redheugh court, gateshead, ne82tt

Above 9th floor, Flat, Bathroom and W/C, No garden, Supported Housing

REQUIRES: 2 Bedrooms House Preferred area: Hallgarth Estate

for additional information see website or contact local office.



Ref no :18290

Key



Number of bedrooms



Off road parking



Own garden



Shared Garden



No Garden



Pets permitted



Pets not permitted



Lift available



Supported housing

Mutual Exchange Property

Landlord: Gateshead Housing Company

Dunston Road Estate



Bedrooms 2

meadow lane, dunston, gateshead, tyne & wear,

Ground Floor, House, Upper Floor Bathroom with W/C, Private garden

REQUIRES: 3 Bedrooms House Preferred area: Holmeside

for additional information see website or contact local office.



Ref no :17072

Mutual Exchange Property

Landlord: Gateshead Housing Company

Dunston Road Estate



Bedrooms 2

MEADOW LANE, GATESHEAD, NE11 9PP

House, Bathroom and W/C, Private garden

REQUIRES: 3 Bedrooms - 4 Bedrooms House Preferred area: Dunston Road Estate

for additional information see website or contact local office.



Ref no :19876

Mutual Exchange Property

Landlord: Gateshead Housing Company

Dunston Road Estate



Bedrooms 2

meadow lane, gateshead, tyne n wear, ne11 9pn

House, Upper Floor Bathroom with W/C, Private garden

REQUIRES: 3 Bedrooms - 4 Bedrooms House Preferred area: Dunston Hill Estate

for additional information see website or contact local office.



Ref no :5252

Mutual Exchange Property

Landlord: Gateshead Housing Company

Dunston Road Estate



Bedrooms 3

Lister Avenue, Dunston, Gateshead, Tyne and Wear,

Ground Floor, House, Ground Floor Bathroom with W/C, Check garden on viewing

REQUIRES: 2 Bedrooms House Preferred area: Dunston Road Estate

for additional information see website or contact local office.



Ref no :9078

Mutual Exchange Property

Landlord: Gateshead Housing Company

East Denton



Bedrooms 2

lindisfarne close, west denton, ne52bu

Ground Floor, House, Upper Floor Bathroom and Separate WC, Private garden

REQUIRES: 3 Bedrooms House Preferred area: Hole in the Wall

for additional information see website or contact local office.



Ref no :4638

Mutual Exchange Property

Landlord: Gateshead Housing Company

East Street



Bedrooms 2

Park Court, Gateshead, NE8 3JN

6th floor, Flat, Bathroom and W/C, Communal garden

REQUIRES: 2 Bedrooms House Preferred area: Ryton Central

for additional information see website or contact local office.



Ref no :9596

Key



Number of bedrooms



Off road parking



Own garden



Shared Garden



No Garden



Pets permitted



Pets not permitted



Lift available



Supported housing

Mutual Exchange Property

Landlord: Gateshead Housing Company

Eighton Banks



Bedrooms 3

, REDEMARSH, LEAM LANE, TYNE AND WEAR, NE10

Ground Floor, House, Check bathroom on viewing, Private garden

REQUIRES: 2 Bedrooms - 3 Bedrooms House Preferred area: Harlow Green

for additional information see website or contact local office.



Ref no :8915

Mutual Exchange Property

Landlord: Gateshead Housing Company

Elizabethville



Bedrooms 2

Lansbury Drive, Birtley, Chester le Street, DH3 1HN

House, Upper Floor Bathroom with W/C, Private garden

REQUIRES: 3 Bedrooms House Preferred area: Whickham North Estate

for additional information see website or contact local office.



Ref no :8164

Mutual Exchange Property

Landlord: Gateshead Housing Company

Elizabethville



Bedrooms 3

elisabeth avenue, 99 elisabeth avenue, dh3 1ja

Ground Floor, House, Ground Floor Bathroom with W/C, Private garden

REQUIRES: 4 Bedrooms House, Maisonette Preferred area: Elizabethville

for additional information see website or contact local office.



Ref no :4775

Mutual Exchange Property

Landlord: Gateshead Housing Company

Elizabethville



Bedrooms 4

windsor road, birtley, dh3 1hy

House, Ground Floor Bathroom with Separate WC, Check garden on viewing

REQUIRES: 2 Bedrooms - 3 Bedrooms House Preferred area: Elizabethville

for additional information see website or contact local office.



Ref no :3170

Mutual Exchange Property

Landlord: Gateshead Housing Company

Elizabethville



Bedrooms 2

Ashgrove Terrace, Birtley, Chester Le Street, DH3

House, Bathroom and W/C, Check garden on viewing

REQUIRES: 2 Bedrooms - 3 Bedrooms House Preferred area: Harlow Green

for additional information see website or contact local office.



Ref no :2169

Mutual Exchange Property

Landlord: Gateshead Housing Company

Elizabethville



Bedrooms 2

elisabeth avenue, birtley, county durham, dh3 1hz

House, Bathroom and W/C, Check garden on viewing

REQUIRES: 3 Bedrooms House Preferred area: Allerdene

for additional information see website or contact local office.



Ref no :9730

Key



Number of bedrooms



Off road parking



Own garden



Shared Garden



No Garden



Pets permitted



Pets not permitted



Lift available



Supported housing

Mutual Exchange Property

Landlord: Gateshead Housing Company

Elizabethville



Bedrooms 3

devon crescent, birtley, chester-le-street, county

House, Ground Floor Bathroom with W/C, Check garden on viewing

REQUIRES: 3 Bedrooms - 4 Bedrooms House Preferred area: Birtley East

for additional information see website or contact local office.



Ref no :10679

Mutual Exchange Property

Landlord: Gateshead Housing Company

Elizabethville



Bedrooms 2

ashgrove terrace, birtley, dh31jh

House, Bathroom and W/C, Private garden

REQUIRES: 2 Bedrooms - 3 Bedrooms House Preferred area: Kibblesworth

for additional information see website or contact local office.



Ref no :12271

Mutual Exchange Property

Landlord: Gateshead Housing Company

Elizabethville



Bedrooms 2

rosewood terrace, birtley, dh3 1jj

Ground Floor, House, Bathroom and W/C, Private garden

REQUIRES: 3 Bedrooms House Preferred area: Wrekenton

for additional information see website or contact local office.



Ref no :12334

Mutual Exchange Property

Landlord: Gateshead Housing Company

Elizabethville



Bedrooms 2

Devon Crescent, Birtley, Chester le Street, County

House, Bathroom and W/C, Private garden

REQUIRES: 2 Bedrooms - 3 Bedrooms House Preferred area: Windy Nook

for additional information see website or contact local office.



Ref no :13294

Mutual Exchange Property

Landlord: Gateshead Housing Company

Elizabethville



Bedrooms 4

DEVON CRESCENT, BIRTLEY, CH-LE-STREET,

Ground Floor, House, Ground Floor Shower and W/C, Private garden

REQUIRES: 3 Bedrooms House Preferred area: Elizabethville

for additional information see website or contact local office.



Ref no :19114

Mutual Exchange Property

Landlord: Gateshead Housing Company

Elizabethville



Bedrooms 4

Elisabeth Avenue, Birtley, Chester-Le-Street, DH3

House, Ground Floor Bathroom with W/C, Private garden

REQUIRES: 3 Bedrooms House Preferred area: Birtley East

for additional information see website or contact local office.



Ref no :19559

Key



Number of bedrooms



Off road parking



Own garden



Shared Garden



No Garden



Pets permitted



Pets not permitted



Lift available



Supported housing

Mutual Exchange Property

Landlord: Gateshead Housing Company

Elizabethville



Bedrooms 1

Lansbury Drive, Birtley, DH31HL

1st floor, House, Upper Floor Bathroom with W/C, Private garden

REQUIRES: 2 Bedrooms - 3 Bedrooms House, Flat, Maisonette Preferred area: Portmeads

for additional information see website or contact local office.



Ref no :20211

Mutual Exchange Property

Landlord: Gateshead Housing Company

Elizabethville



Bedrooms 2

Elisabeth Avenue, Birtley, Chester Le Street, DH3

House, Bathroom and W/C, Private garden

REQUIRES: 2 Bedrooms - 3 Bedrooms House Preferred area: Kibblesworth

for additional information see website or contact local office.



Ref no :18176

Mutual Exchange Property

Landlord: Gateshead Housing Company

Elizabethville



Bedrooms 3

Windsor Road, Birtley, Chester-Le-Street, DH3 1HY

Ground Floor, House, Ground Floor Shower and W/C, Private garden

REQUIRES: 4 Bedrooms House Preferred area: Elizabethville

for additional information see website or contact local office.



Ref no :17732

Mutual Exchange Property

Landlord: Gateshead Housing Company

Elizabethville



Bedrooms 2

RUTLAND SQUARE, BIRTLEY, CHESTER-LE-STREET,

Ground Floor, House, Bathroom and W/C, Private garden

REQUIRES: 3 Bedrooms - 4 Bedrooms House Preferred area: Birtley East

for additional information see website or contact local office.



Ref no :17863

Mutual Exchange Property

Landlord: Gateshead Housing Company

Elizabethville



Bedrooms 3

Lansbury Drive, Birtley, Chester Le Street, DH3 1HN

House, Ground Floor Bathroom with Separate WC, Private garden

REQUIRES: 4 Bedrooms - 5 Bedrooms House Preferred area: Vigo

for additional information see website or contact local office.



Ref no :17302

Mutual Exchange Property

Landlord: Gateshead Housing Company

Ellen Wilkinson Estate



Bedrooms 3

priestley gardens, wardley gateshead, tyne & wear,

House, Bathroom and W/C, Private garden

REQUIRES: 2 Bedrooms - 3 Bedrooms House Preferred area: Ellen Wilkinson Estate

for additional information see website or contact local office.



Ref no :18743

Key



Number of bedrooms



Off road parking



Own garden



Shared Garden



No Garden



Pets permitted



Pets not permitted



Lift available



Supported housing

Mutual Exchange Property

Landlord: Gateshead Housing Company

Ellen Wilkinson Estate



Bedrooms 3

cripps avenue, wardley, gateshead, ne10 8tj

House, Bathroom and W/C, Private garden

REQUIRES: 2 Bedrooms House Preferred area: Ellen Wilkinson Estate

for additional information see website or contact local office.



Ref no :19296

Mutual Exchange Property

Landlord: Gateshead Housing Company

Ellen Wilkinson Estate



Bedrooms 2

Dexter Way, Felling, Gateshead, NE10 9JJ

Ground Floor, Bungalow, Bathroom and W/C, Private garden

REQUIRES: 1 Bedroom - 2 Bedrooms Bungalow Preferred area: Grange Crescent Estate

for additional information see website or contact local office.



Ref no :25009

Mutual Exchange Property

Landlord: Gateshead Housing Company

Ellen Wilkinson Estate



Bedrooms 3

Cripps Avenue, Gateshead, NE10 8TJ

House, Bathroom and W/C, Private garden

REQUIRES: 2 Bedrooms House, Flat, Maisonette Preferred area: Ellen Wilkinson Estate

for additional information see website or contact local office.



Ref no :13296

Mutual Exchange Property

Landlord: Gateshead Housing Company

Ellen Wilkinson Estate



Bedrooms 3

cripps avenue, wardley, ne10 8tj

Ground Floor, House, Bathroom and W/C, Private garden

REQUIRES: 2 Bedrooms House, Maisonette Preferred area: Ellen Wilkinson Estate

for additional information see website or contact local office.



Ref no :13532

Mutual Exchange Property

Landlord: South Tyneside Homes

Ellen Wilkinson Estate



Bedrooms 3

Keir Hardie Avenue, Gateshead, NE10 8EL

House, Bathroom and W/C, Private garden

REQUIRES: 1 Bedroom House, Flat, Studio flat, Maisonette Preferred area: Hebburn New Town

for additional information see website or contact local office.



Ref no :15440

Mutual Exchange Property

Landlord: Gateshead Housing Company

Ellen Wilkinson Estate



Bedrooms 2

cotemedede court, leam lane, gateshead, tyne and

1st floor, Flat, Check bathroom on viewing, Check garden on viewing, Supported Housing

REQUIRES: 1 Bedroom Flat Preferred area: Windy Nook

for additional information see website or contact local office.



Ref no :10390

Key



Number of bedrooms



Off road parking



Own garden



Shared Garden



No Garden



Pets permitted



Pets not permitted



Lift available



Supported housing

Mutual Exchange Property

Landlord: Gateshead Housing Company

Ellen Wilkinson Estate



Bedrooms 3

cripps avenue, wardley, gateshead, ne10 8tj

House, Bathroom and W/C, Private garden

REQUIRES: 2 Bedrooms House Preferred area: Ellen Wilkinson Estate

for additional information see website or contact local office.



Ref no :10412

Mutual Exchange Property

Landlord: Gateshead Housing Company

Ellen Wilkinson Estate



Bedrooms 2

cotemedede court, leam lane, gateshead, tyne and

1st floor, Flat, Bathroom and W/C, Communal garden

REQUIRES: 1 Bedroom - 2 Bedrooms House, Flat, Bungalow, Studio flat, Maisonette Preferred area: Wardley

for additional information see website or contact local office.



Ref no :10707

Mutual Exchange Property

Landlord: Gateshead Housing Company

Ellen Wilkinson Estate



Bedrooms 3

pankhurst gdns, wardley, gateshead, tyne and

House, Private garden

REQUIRES: 2 Bedrooms House Preferred area: Pelaw

for additional information see website or contact local office.



Ref no :10764

Mutual Exchange Property

Landlord: Gateshead Housing Company

Ellen Wilkinson Estate



Bedrooms 1

Toberty Gardens, Wardley, Gateshead, NE10 8ES

Bungalow, Ground Floor Shower and W/C, Private garden

REQUIRES: 1 Bedroom Bungalow Preferred area: Grange Crescent Estate

for additional information see website or contact local office.



Ref no :4866

Mutual Exchange Property

Landlord: Gateshead Housing Company

Emmaville Estate



Bedrooms 2

Eden Dale, Crawcrook, Ryton, Ne404px

House, Bathroom and W/C, Private garden

REQUIRES: 2 Bedrooms - 4 Bedrooms House Preferred area: Parkhead

for additional information see website or contact local office.



Ref no :23436

Mutual Exchange Property

Landlord: Gateshead Housing Company

Eslington Park



Bedrooms 2

Angus Road, Gateshead, NE8 2TH

House, Ground Floor Bathroom with Separate WC, Private garden

REQUIRES: 3 Bedrooms - 4 Bedrooms House Preferred area: Eslington Park

for additional information see website or contact local office.



Ref no :18175

Key



Number of bedrooms



Off road parking



Own garden



Shared Garden



No Garden



Pets permitted



Pets not permitted



Lift available



Supported housing

Mutual Exchange Property

Landlord: Gateshead Housing Company

Eslington Park



Bedrooms 2

wooler crescent, gateshead, tyne and wear, ne82tp

2nd floor, Flat, Bathroom and W/C, No garden

REQUIRES: 1 Bedroom House, Bungalow, Studio flat Preferred area: Victoria House

for additional information see website or contact local office.



Ref no :17898

Mutual Exchange Property

Landlord: Gateshead Housing Company

Eslington Park



Bedrooms 2

Wooler Crescent, Teams, Gateshead, NE8 2TP

Ground Floor, Flat, Ground Floor Bathroom with W/C, Communal garden

REQUIRES: 1 Bedroom - 2 Bedrooms House, Flat, Bungalow, Maisonette Preferred area: Grange Crescent Estate

for additional information see website or contact local office.



Ref no :4865

Mutual Exchange Property

Landlord: Gateshead Housing Company

Eslington Park



Bedrooms 3

chestnut gardens, teams, gateshead, ne8 2tj

House, Upper Floor Bathroom with W/C, Private garden

REQUIRES: 2 Bedrooms House, Bungalow Preferred area: Eslington Park

for additional information see website or contact local office.



Ref no :9111

Mutual Exchange Property

Landlord: Gateshead Housing Company

Eslington Park



Bedrooms 2

Wooler Crescent, Teams, Gateshead, NE8 2TP

Ground Floor, Flat, Bathroom and W/C, Private garden

REQUIRES: 2 Bedrooms - 3 Bedrooms House Preferred area: Beacon Lough Upper

for additional information see website or contact local office.



Ref no :6576

Mutual Exchange Property

Landlord: Gateshead Housing Company

Eslington Park



Bedrooms 2

Angus Road, Teams, Gateshead, Tyne & Wear, NE8

Ground Floor, House, Ground Floor Bathroom with W/C, Private garden

REQUIRES: 3 Bedrooms House, Flat Preferred area: Allerdene

for additional information see website or contact local office.



Ref no :10091

Mutual Exchange Property

Landlord: Gateshead Housing Company

Eslington Park



Bedrooms 2

Redheugh Court, Teams, Gateshead, NE8 2TS

Above 9th floor, Flat, Bathroom and W/C, No garden

REQUIRES: 1 Bedroom Flat, Bungalow, Studio flat Preferred area: Dunston Hill Estate

for additional information see website or contact local office.



Ref no :12395

Key



Number of bedrooms



Off road parking



Own garden



Shared Garden



No Garden



Pets permitted



Pets not permitted



Lift available



Supported housing

Mutual Exchange Property

Landlord:Gateshead Housing Company

Eslington Park



Bedrooms 3

wooler cresent, teams, ne8 2tp

Ground Floor, House, Ground Floor Bathroom with W/C, Private garden

REQUIRES: 2 Bedrooms House Preferred area: Lobley Hill

for additional information see website or contact local office.



Ref no :11578

Mutual Exchange Property

Landlord:Gateshead Housing Company

Eslington Park



Bedrooms 2

MORRIS STREET, GATESHEAD, NE8 2TN

Ground Floor, Flat, Bathroom and W/C, Check garden on viewing

REQUIRES: 3 Bedrooms House Preferred area: Dunston Road Estate

for additional information see website or contact local office.



Ref no :14633

Mutual Exchange Property

Landlord:Gateshead Housing Company

Falla Park



Bedrooms 4

sirgodfrey thomson court, felling, gateshead,

1st floor, Maisonette, Upper Floor Bathroom and Separate WC, No garden

REQUIRES: 1 Bedroom - 2 Bedrooms House, Flat, Maisonette Preferred area: Felling

for additional information see website or contact local office.



Ref no :14395

Mutual Exchange Property

Landlord:Gateshead Housing Company

Falla Park



Bedrooms 2

dundas way, felling, gateshead, ne10 9jr

Ground Floor, Flat, Ground Floor Bathroom with W/C, Communal garden

REQUIRES: 2 Bedrooms - 3 Bedrooms House Preferred area: Felling

for additional information see website or contact local office.



Ref no :13058

Mutual Exchange Property

Landlord:Gateshead Housing Company

Falla Park



Bedrooms 3

millfield gardens, felling, gateshead, tyne and wear,

Ground Floor, House, Ground Floor Bathroom with W/C, Private garden

REQUIRES: 2 Bedrooms House Preferred area: Windy Nook

for additional information see website or contact local office.



Ref no :13182

Mutual Exchange Property

Landlord:Gateshead Housing Company

Falla Park



Bedrooms 2

Woodlands Terrace, Felling, Gateshead, NE10 9HT

House, Bathroom and W/C, Private garden

REQUIRES: 3 Bedrooms House Preferred area: Falla Park

for additional information see website or contact local office.



Ref no :6421

Key



Number of bedrooms



Off road parking



Own garden



Shared Garden



No Garden



Pets permitted



Pets not permitted



Lift available



Supported housing

Mutual Exchange Property

Landlord:Gateshead Housing Company

Falla Park



Bedrooms 2

Clarke Terrace, Gateshead, NE10 9HY

Ground Floor, Maisonette, Bathroom and W/C, Communal garden

REQUIRES: 2 Bedrooms - 3 Bedrooms House, Flat, Maisonette
Preferred area: Rose Milling

for additional information see website or contact local office.



Ref no :7173

Mutual Exchange Property

Landlord:Gateshead Housing Company

Falla Park



Bedrooms 3

Dundas Way, Felling, tyne and wear, ne109jw

House, Upper Floor Bathroom with WC and Ground Floor WC, Private garden

REQUIRES: 2 Bedrooms - 3 Bedrooms House Preferred area:
Redemarsch Estate

for additional information see website or contact local office.



Ref no :17482

Mutual Exchange Property

Landlord:Your Homes Newcastle

Fenham



Bedrooms 1

Todd's Nook, Westgate Road, Newcastle upon Tyne,

Above 9th floor, Flat, Bathroom and W/C, No garden

REQUIRES: 1 Bedroom - 2 Bedrooms House, Flat, Bungalow, Maisonette Preferred area: Fenham

for additional information see website or contact local office.



Ref no :23652

Mutual Exchange Property

Landlord:Gateshead Housing Company

Fenham



Bedrooms 3

bertram crescent, Pendower, Ne156px

2nd floor, House, Upper Floor Bathroom and Separate WC, Private garden

REQUIRES: 2 Bedrooms - 3 Bedrooms House Preferred area: Hole in the Wall

for additional information see website or contact local office.



Ref no :25035

Mutual Exchange Property

Landlord:Gateshead Housing Company

Fieldhouse



Bedrooms 2

SALTWELL ROAD, BENSAM, GATESHEAD, TYNE &

House, Bathroom and W/C, Private garden

REQUIRES: 2 Bedrooms House Preferred area: Lobley Hill

for additional information see website or contact local office.



Ref no :16144

Mutual Exchange Property

Landlord:Gateshead Housing Company

Fieldhouse



Bedrooms 2

edison gardens, Saltwell , Gateshead , Ne84se

House, Upper Floor Bathroom and Separate WC, Private garden

REQUIRES: 3 Bedrooms - 4 Bedrooms House Preferred area: Lobley Hill

for additional information see website or contact local office.



Ref no :15812

Key



Number of bedrooms



Off road parking



Own garden



Shared Garden



No Garden



Pets permitted



Pets not permitted



Lift available



Supported housing

Mutual Exchange Property

Landlord:Gateshead Housing Company

Fieldhouse



Bedrooms 1

Marian Court, Gateshead, NE8 2HX

Ground Floor, Flat, Ground Floor Shower and W/C, Communal garden, Adapted,

REQUIRES: 2 Bedrooms House, Flat, Bungalow Preferred area: Gosforth

for additional information see website or contact local office.



Ref no :7098

Mutual Exchange Property

Landlord:Gateshead Housing Company

Fieldhouse



Bedrooms 2

Rawling Road, Gateshead, NE8 4UE

1st floor, House, Upper Floor Bathroom and Separate WC, Check garden on viewing

REQUIRES: 3 Bedrooms House Preferred area: Fieldhouse

for additional information see website or contact local office.



Ref no :9362

Mutual Exchange Property

Landlord:Gateshead Housing Company

Fieldhouse



Bedrooms 2

saltwell road, bensham, gateshead , ne8 4tn

House, Upper Floor Bathroom and Separate WC, Check garden on viewing

REQUIRES: 2 Bedrooms House Preferred area: Lobley Hill

for additional information see website or contact local office.



Ref no :9019

Mutual Exchange Property

Landlord:Gateshead Housing Company

Fieldhouse



Bedrooms 2

saltwell road, bensham, gateshead, tyne and wear,

2nd floor, House, Upper Floor Bathroom and Separate WC, Check garden on viewing

REQUIRES: 2 Bedrooms House Preferred area: Dunston Hill Estate

for additional information see website or contact local office.



Ref no :8628

Mutual Exchange Property

Landlord:Gateshead Housing Company

Fieldhouse



Bedrooms 2

Fontwell Drive, Bensham, Gateshead, Tyne and

1st floor, Flat, Bathroom and W/C, Communal garden

REQUIRES: 1 Bedroom Flat, Studio flat, Maisonette Preferred area: Lobley Hill

for additional information see website or contact local office.



Ref no :8167

Mutual Exchange Property

Landlord:Gateshead Housing Company

Fieldhouse



Bedrooms 3

Wetherby Grove, Teams, Gateshead, NE8 4YY

Ground Floor, House, Bathroom and W/C, Private garden

REQUIRES: 3 Bedrooms House Preferred area: Birtley East

for additional information see website or contact local office.



Ref no :7832

Key



Number of bedrooms



Off road parking



Own garden



Shared Garden



No Garden



Pets permitted



Pets not permitted



Lift available



Supported housing

Mutual Exchange Property

Landlord: Gateshead Housing Company

Fieldhouse



Bedrooms 2

SALTWELL ROAD GATESHEAD, 289 SALTWELL ROAD

Ground Floor, House, Upper Floor Bathroom and Separate WC, Private garden

REQUIRES: 3 Bedrooms - 2 Bedrooms House Preferred area: Ventnor Crescent Estate

for additional information see website or contact local office.



Ref no :1847

Mutual Exchange Property

Landlord: Gateshead Housing Company

Fieldhouse



Bedrooms 3

Saltwell Road, Gateshead, NE8 4TL

House, Ground Floor Bathroom with Separate WC, Private garden

REQUIRES: 3 Bedrooms - 4 Bedrooms House Preferred area: Ellen Wilkinson Estate

for additional information see website or contact local office.



Ref no :664

Mutual Exchange Property

Landlord: Gateshead Housing Company

Fieldhouse



Bedrooms 2

fontwell drive, gateshead, ne84ys

1st floor, Maisonette, Bathroom and W/C, No garden

REQUIRES: 2 Bedrooms - 3 Bedrooms House, Maisonette Preferred area: Barley Mow New

for additional information see website or contact local office.



Ref no :1051

Mutual Exchange Property

Landlord: Gateshead Housing Company

Fieldhouse



Bedrooms 3

Saltwell Road, Bensham, NE8 4TH

3rd floor, Flat, Bathroom and W/C, Communal garden

REQUIRES: 2 Bedrooms House Preferred area: Redemarsch Estate

for additional information see website or contact local office.



Ref no :13980

Mutual Exchange Property

Landlord: Gateshead Housing Company

Fieldhouse



Bedrooms 2

saltwell road, Bensham, Gateshead, Tyne & Wear ,

House, Upper Floor Bathroom and Separate WC, Private garden

REQUIRES: 2 Bedrooms House, Flat Preferred area: Lobley Hill

for additional information see website or contact local office.



Ref no :14029

Mutual Exchange Property

Landlord: Gateshead Housing Company

Fieldhouse



Bedrooms 2

Fontwell Drive, Gateshead, NE8 4YF

2nd floor, Flat, Check bathroom on viewing, No garden

REQUIRES: 2 Bedrooms House Preferred area: Lobley Hill

for additional information see website or contact local office.



Ref no :13846

Key



Number of bedrooms



Off road parking



Own garden



Shared Garden



No Garden



Pets permitted



Pets not permitted



Lift available



Supported housing

Mutual Exchange Property

Landlord: Gateshead Housing Company

Fieldhouse



Bedrooms 1

, fontwell drive, gateshead, ne8 4ys

Ground Floor, Flat, Communal garden, Adapted,

REQUIRES: 1 Bedroom - 2 Bedrooms Flat, Bungalow, Maisonette
Preferred area: Fieldhouse

for additional information see website or contact local office.



Ref no :15396

Mutual Exchange Property

Landlord: Gateshead Housing Company

Fieldhouse



Bedrooms 2

CARTMEL GROVE, GATESHEAD, NE8 4YZ

1st floor, Flat, Bathroom and W/C, No garden

REQUIRES: 1 Bedroom - 2 Bedrooms House, Flat, Bungalow
Preferred area: Watergate

for additional information see website or contact local office.



Ref no :10891

Mutual Exchange Property

Landlord: Gateshead Housing Company

Florence Avenue Estate



Bedrooms 2

florence avenue, sheriff hill, gateshead, ne9 5sq

1st floor, Flat, Bathroom and W/C, Check garden on viewing

REQUIRES: 1 Bedroom - 2 Bedrooms Flat, Bungalow Preferred area: Lyndhurst South

for additional information see website or contact local office.



Ref no :8055

Mutual Exchange Property

Landlord: Gateshead Housing Company

Florence Avenue Estate



Bedrooms 1

Hillside Place, Gateshead, Tyne and Wear, NE9 5SP

Bungalow, Check bathroom on viewing, Check garden on viewing, Adapted,

REQUIRES: 1 Bedroom Bungalow Preferred area: Wardley

for additional information see website or contact local office.



Ref no :25105

Mutual Exchange Property

Landlord: Gateshead Housing Company

Flowershow Field



Bedrooms 2

Helmsdale Avenue, Felling, Gateshead, Tyne and

Ground Floor, House, Ground Floor Bathroom with W/C, Check garden on viewing, Adapted,

REQUIRES: 2 Bedrooms Flat, Bungalow Preferred area: Boghouse

for additional information see website or contact local office.



Ref no :10074

Mutual Exchange Property

Landlord: Gateshead Housing Company

Forest Hall



Bedrooms 2

Holly Avenue, Forest Hall, NE12 7NE

Ground Floor, House, Ground Floor Bathroom with Separate WC, Private garden

REQUIRES: 3 Bedrooms - 4 Bedrooms House, Maisonette Preferred area: Lobley Hill

for additional information see website or contact local office.



Ref no :10375

Key



Number of bedrooms



Off road parking



Own garden



Shared Garden



No Garden



Pets permitted



Pets not permitted



Lift available



Supported housing

Mutual Exchange Property

Landlord: Gateshead Housing Company

Grange Crescent Estate



Bedrooms 1

Alderwyck, Leam Lane, Gateshead, Tyne & Wear,

Ground Floor, Bungalow, Bathroom and W/C, Check garden on viewing

REQUIRES: 2 Bedrooms House, Flat, Maisonette Preferred area: Felling

for additional information see website or contact local office.



Ref no :10041

Mutual Exchange Property

Landlord: Gateshead Housing Company

Grange Crescent Estate



Bedrooms 2

Stileford, Leam Lane, Gateshead, NE10 8US

1st floor, Flat, Bathroom and W/C, Private garden

REQUIRES: 1 Bedroom - 2 Bedrooms House, Bungalow Preferred area: Grange Crescent Estate

for additional information see website or contact local office.



Ref no :12029

Mutual Exchange Property

Landlord: Gateshead Housing Company

Grange Crescent Estate



Bedrooms 2

stileford, leam lane estate, gateshead, ne108us

1st floor, Flat, Bathroom and W/C, Private garden

REQUIRES: 1 Bedroom - 2 Bedrooms House, Bungalow Preferred area: Grange Crescent Estate

for additional information see website or contact local office.



Ref no :11659

Mutual Exchange Property

Landlord: Gateshead Housing Company

Grange Crescent Estate



Bedrooms 2

longrigg, leam lane, gateshead, tyne and wear,

House, Bathroom and W/C, Private garden

REQUIRES: 3 Bedrooms - 5+ Bedrooms House Preferred area: Millford/Ridgeway

for additional information see website or contact local office.



Ref no :12439

Mutual Exchange Property

Landlord: Gateshead Housing Company

Grange Crescent Estate



Bedrooms 2

LONGRIGG, LEAM LANE, GATESHEAD, TYNE AND

House, Bathroom and W/C, Private garden

REQUIRES: 3 Bedrooms House Preferred area: Grange Crescent Estate

for additional information see website or contact local office.



Ref no :6113

Mutual Exchange Property

Landlord: Gateshead Housing Company

Grange Crescent Estate



Bedrooms 2

longrigg, leam lane est, gateshead, tyne&wear,

1st floor, House, Bathroom and W/C, Private garden

REQUIRES: 3 Bedrooms - 4 Bedrooms House Preferred area: Millford/Ridgeway

for additional information see website or contact local office.



Ref no :17417

Key



Number of bedrooms



Off road parking



Own garden



Shared Garden



No Garden



Pets permitted



Pets not permitted



Lift available



Supported housing